

STANDART^{AI}

Aluminium Profile Company

Solar Mounting Systems



Table of Contents

S-Rail Eco	6
S-Rail	10
S-Sprinter Eco	14
S-Sprinter	18
S-Pro	22
S-Lock Ultimate Edition	28
S-Tile Fundamental+	34
S-Flat Hybrid+ S13	38
S-Flat Hybrid+ EW13	42
S-Flat Hybrid+ S13 LS Edition	46
S-Flat Hybrid+ EW13 LS Edition	50
S-Flat Membrane S13	54
S-Flat Membrane EW13	58
S-Flat Membrane S13 LS Edition	62
S-Flat Membrane EW13 LS Edition	66
S-Shingle X	70
S-Aluform Pekintaş UltraLight	73
S-Aluform Pekintaş Dynamic+	74
S-Hekim Panel UltraLight	79
S-Hekim Panel Dynamic+	80
S-Davut Panel UltraLight	85
S-Davut Panel Dynamic+	86
Aksesuarlar	90

About Us

Standart Aluminium, works on 6000 series aluminum alloys and operates in the fields of aluminum profile production, electrostatic powder coating, anodizing coating and mechanical process in state-of-the-art integrated facilities by carrying out professional studies.

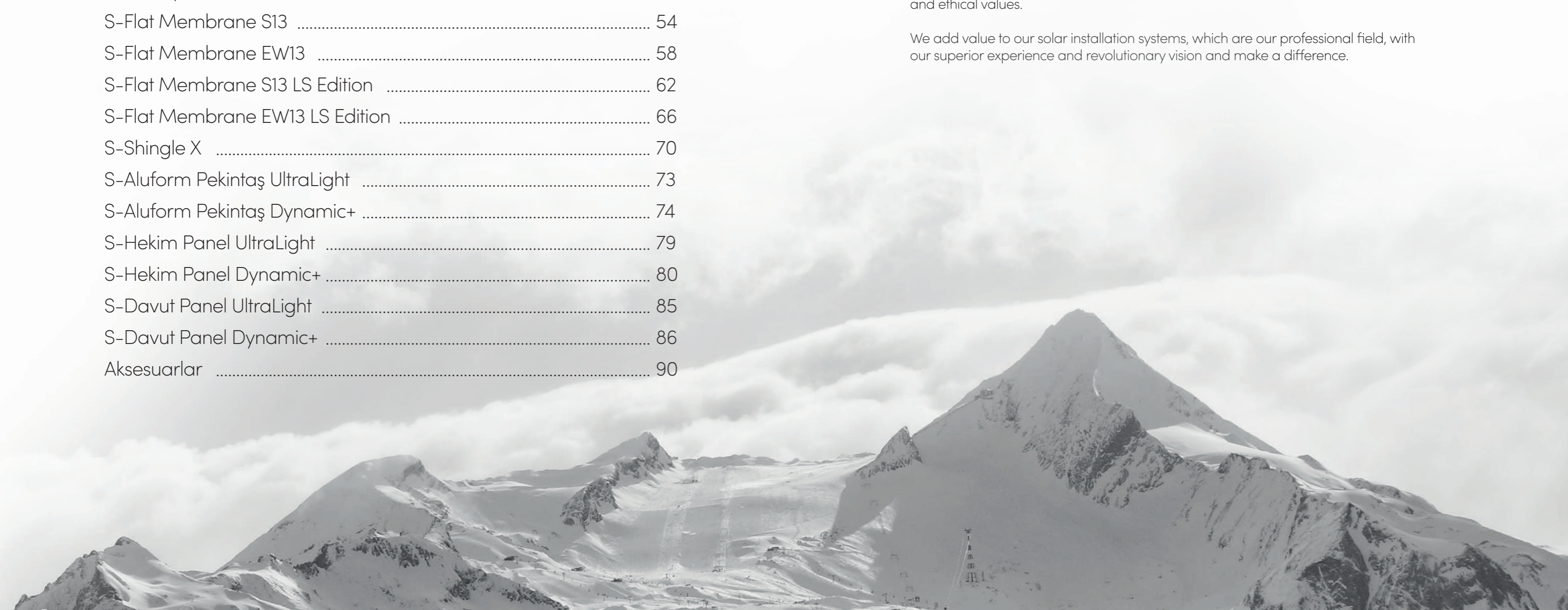
Standart Aluminium, which has deep customer sensitivity, aims to make long-term partnerships with its customers and to sign successful projects with innovative designs, high service and high-level raw material quality.

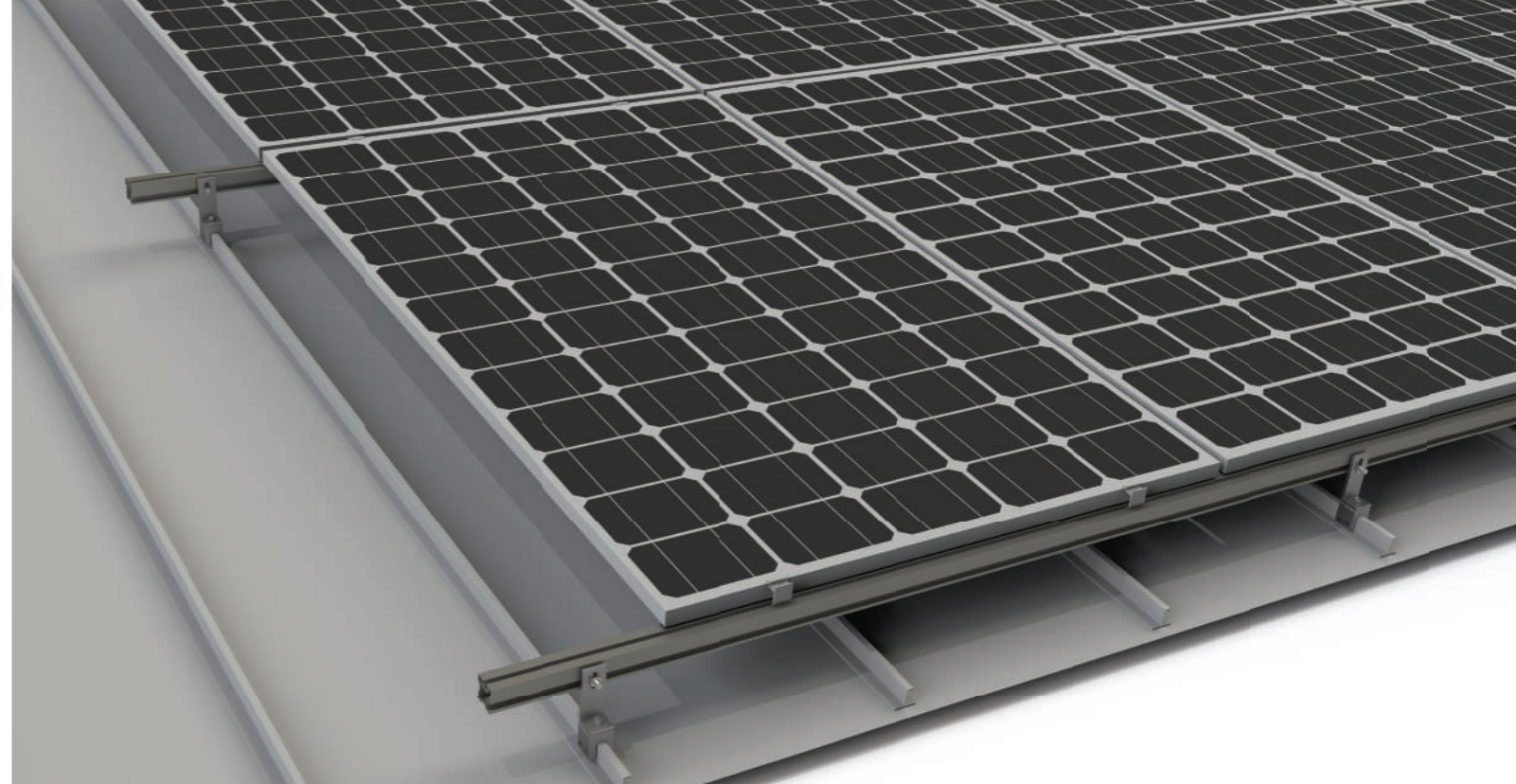
Together with the common spirit of all its employees, Standart Aluminium continues to define technical innovation and set new service standards for a sustainable future.

What makes us unique?

As Standart Aluminium family, we have adopted the mission of offering exceptional quality by advancing with innovations and pursuing perfection with commercial ethics and ethical values.

We add value to our solar installation systems, which are our professional field, with our superior experience and revolutionary vision and make a difference.





Warranty

Standart Aluminium Solar Mounting Systems are guaranteed for 15 years.

standartaluminyum.com/warranty

Static and Load Distribution

Standart Aluminium Solar Mounting Systems are designed in accordance with TSE, Eurocode 1 and Eurocode 9 principles.


Pallet Delivery

Solar mounting systems are delivered on compact pallets to save space and cost.

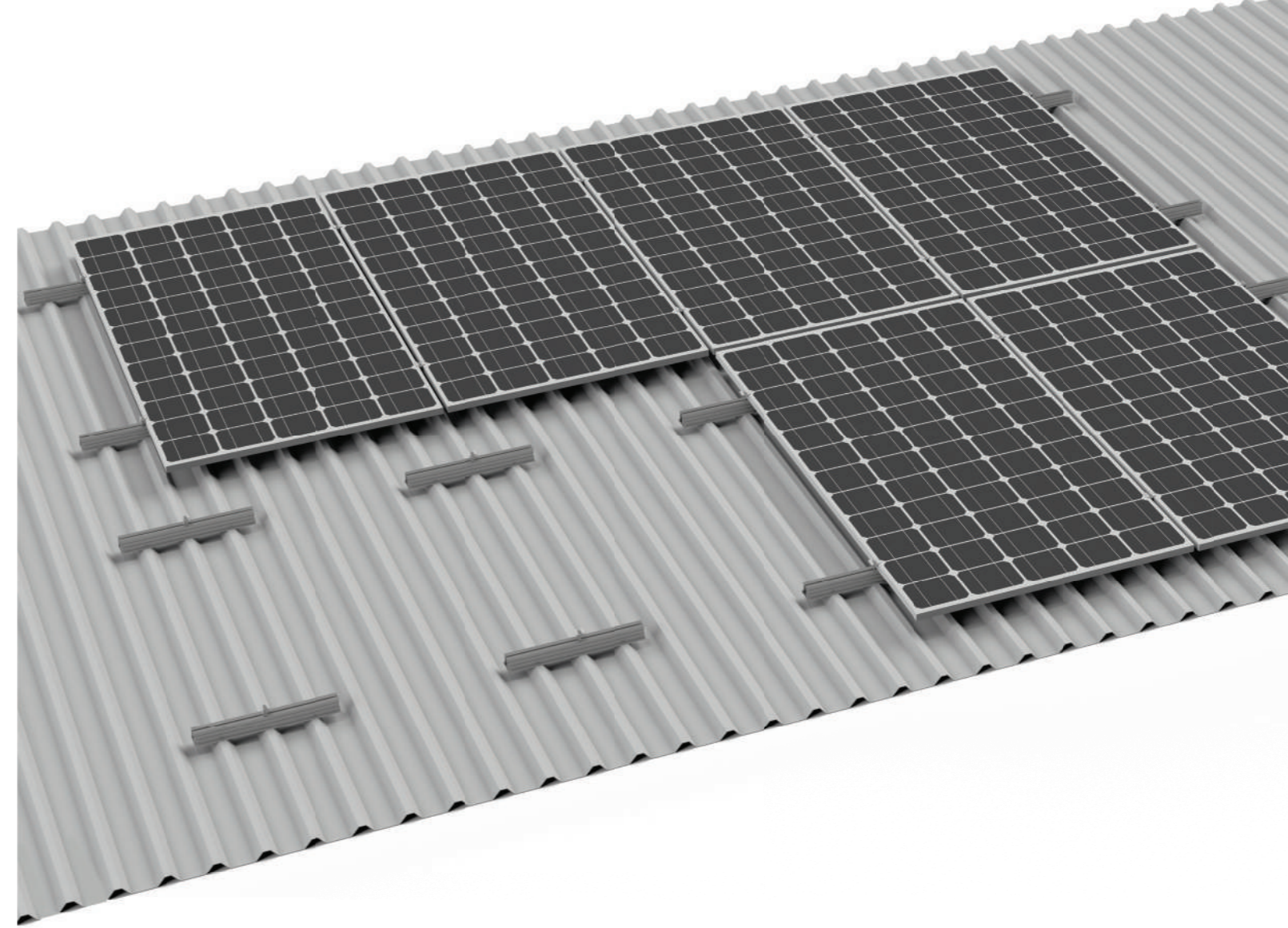
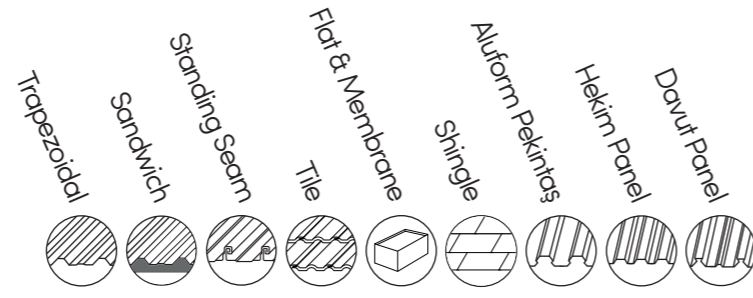


Standart Aluminium Solar Mounting Systems

- Standart Aluminium Solar Mounting Systems offer accurate and economical systems for all roof types.
- All aluminium profiles and accessories used in the systems are produced by Standart Aluminium.
- The systems stand out with its economical, fast, easy and safe features.
- Standart Aluminium finds the most suitable solution for the project with many different height and length options.
- The solar mounting systems designed and manufactured by our professional team as Standart Alüminyum provide safe connection and protect the roof thanks to their unique designs.
- Standard Aluminum Solar Mounting Systems evenly distribute the pressure of the solar panels to the roof with their strong and balanced structures.
- Solar mounting profiles produced from EN AW-6063 aluminum alloy with T66 thermal mechanical property; TSE is designed and manufactured as extremely resistant and strong against snow, wind and earthquake loads specified in Eurocode 1 and Eurocode 9 standards.
- Please contact us for special design system request.
- All aluminium rails and accessories in Standart Aluminium Solar Mounting Systems are patented. Standart Aluminium reserves the right to initiate legal proceedings in the event of unauthorized use or production of its patented profiles.
- All intellectual property rights of this catalogue are owned by Standart Aluminium. The contents of the catalogue are protected by international copyrights, Turkish laws and other international laws.

© 2023-2024 design and visual rights of this catalog is belong to **Standart Aluminium**.
No copyright without permission.
 Patented by Turkish Patent and Brand Office.

General Overview



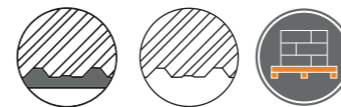
		Trapezoidal	Sandwich	Standing Seam	Tile	Flat & Membrane	Shingle	Aluform Pekintas	Hekim Panel	Davut Panel
■ S-Rail Eco	6	●	●	○	○	○	○	○	○	○
■ S-Rail	10	●	●	○	○	○	○	○	○	○
■ S-Sprinter Eco	14	●	●	○	○	○	○	○	○	○
■ S-Sprinter	18	●	●	○	○	○	○	○	○	○
■ S-Pro	22	●	●	○	○	○	○	○	○	○
■ S-Lock Ultimate Edition	28	○	○	●	○	○	○	○	○	○
■ S-Tile Fundamental+	34	○	○	○	●	○	○	○	○	○
■ S-Flat Hybrid+ S13	38	○	○	○	○	●	○	○	○	○
■ S-Flat Hybrid+ EW13	42	○	○	○	○	○	●	○	○	○
■ S-Flat Hybrid+ S13 LS Edition	46	○	○	○	○	○	●	○	○	○
■ S-Flat Hybrid+ EW13 LS Edition	50	○	○	○	○	○	○	●	○	○
■ S-Flat Membrane S13	54	○	○	○	○	○	○	○	○	○
■ S-Flat Membrane EW13	58	○	○	○	○	○	○	○	○	○
■ S-Flat Membrane S13 LS Edition	62	○	○	○	○	○	○	○	○	○
■ S-Flat Membrane EW13 LS Edition	66	○	○	○	○	○	○	○	○	○
■ S-Shingle X	70	○	○	○	○	○	○	○	○	○
■ S-Aluform Pekintas UltraLight	73	○	○	○	○	○	○	○	○	○
■ S-Aluform Pekintas Dynamic+	74	○	○	○	○	○	○	○	○	○
■ S-Hekim Panel UltraLight	79	○	○	○	○	○	○	○	○	○
■ S-Hekim Panel Dynamic+	80	○	○	○	○	○	○	○	○	○
■ S-Davut Panel UltraLight	85	○	○	○	○	○	○	○	○	○
■ S-Davut Panel Dynamic+	86	○	○	○	○	○	○	○	○	○
■ Accessories	90	●	●	●	●	●	●	●	●	●

● Compatible

○ Not Compatible

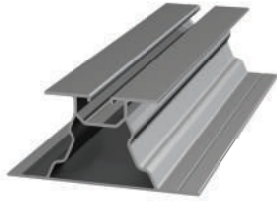
S-Rail Eco

- Suitable for all trapezoidal and sandwich roof types
- Economical, fast, easy and safe
- Accurate and economical solution thanks to 4 different height options
- Equal pressure distribution on the roof thanks to its strong and balanced structure
- Powerful wind resistance with aerodynamical design
- 250 mm, 300 mm, 385 mm and 540 mm length options
- Horizontal and vertical panel placement
- %100 compatible for all solar panels
- Water sealing resistance with S-JF3 screw and EPDM tape
- Special size option on request



S-Rail Eco

S-Rail Eco 40



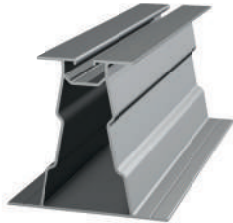
Product No	Descriptions	Weight	Materials
1001	S-Rail Eco 40, Mill Finished	0,866 kg/m	EN AW-6063 / T66
1002	S-Rail Eco 40, Black Anodized		

S-Rail Eco 60



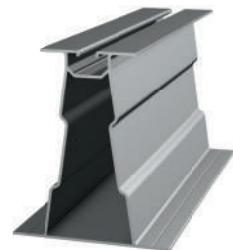
Product No	Descriptions	Weight	Materials
1003	S-Rail Eco 60, Mill Finished	0,995 kg/m	EN AW-6063 / T66
1004	S-Rail Eco 60, Black Anodized		

S-Rail Eco 80



Product No	Descriptions	Weight	Materials
1005	S-Rail Eco 80, Mill Finished	1,285 kg/m	EN AW-6063 / T66
1006	S-Rail Eco 80, Black Anodized		

S-Rail Eco 100



Product No	Descriptions	Weight	Materials
1007	S-Rail Eco 100, Mill Finished	1,445 kg/m	EN AW-6063 / T66
1008	S-Rail Eco 100, Black Anodized		

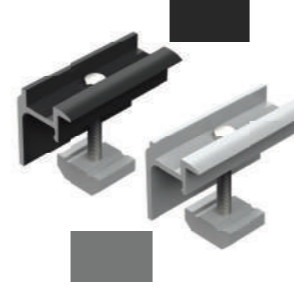
S-Clamp Mid GrandPro



Product No	Descriptions	Length	Materials
9001	S-Clamp Mid GrandPro, Mill Finished	60 mm	EN AW-6063 / T66
9002	S-Clamp Mid GrandPro, Black Anodized		

*Please specify panel size on order.

S-Clamp End GrandPro



Product No	Descriptions	Length	Materials
9003	S-Clamp End GrandPro, Mill Finished	60 mm	EN AW-6063 / T66
9004	S-Clamp End GrandPro, Black Anodized		

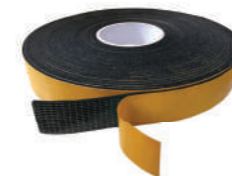
*Please specify panel size on order.

S-JF3 Screw

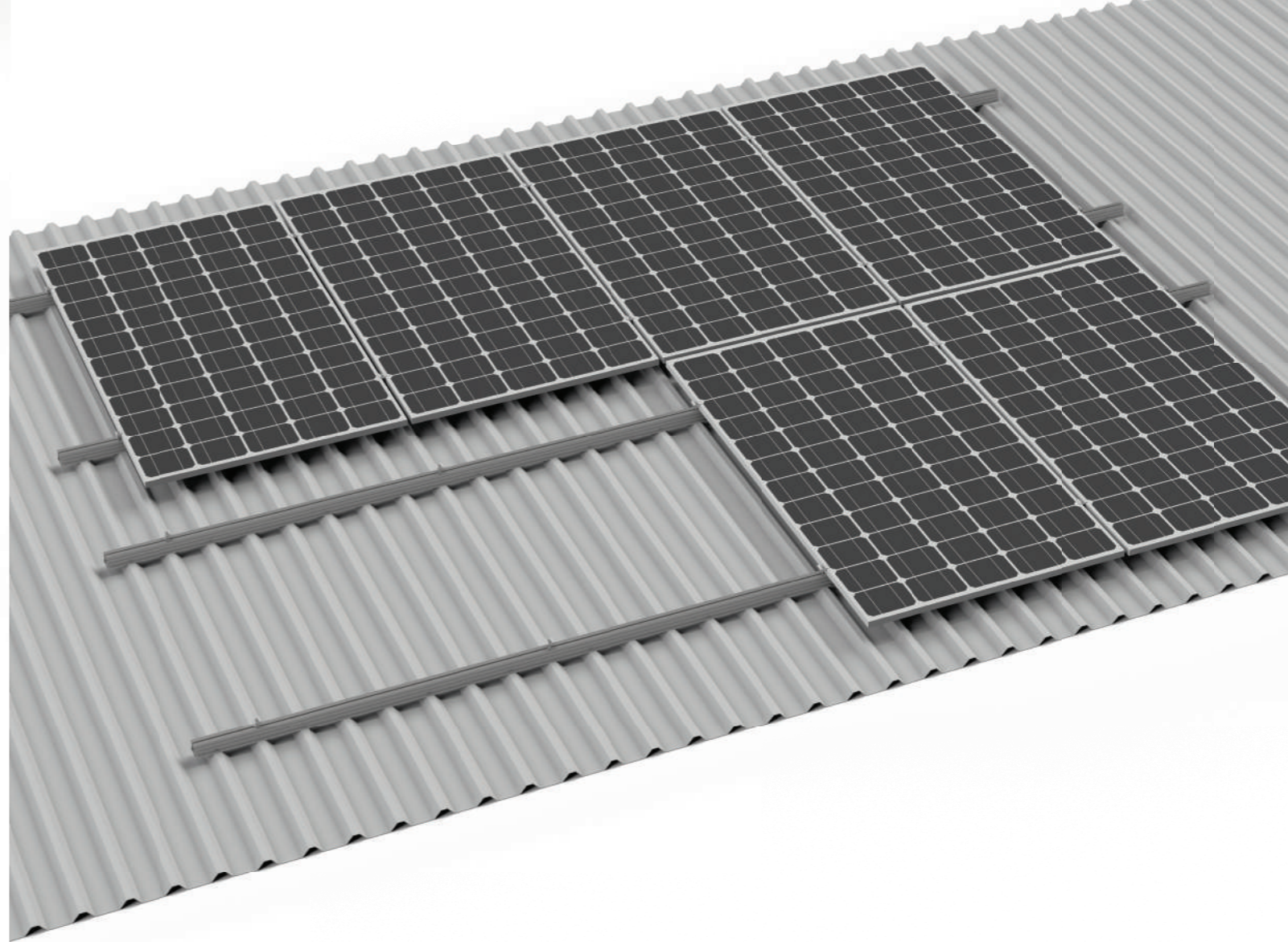


Product No	Descriptions	Length	Materials
9059	S-JF3 Screw 25 mm	25 mm	A2 Stainless Steel
9060	S-JF3 Screw 35 mm	35 mm	

EPDM Band

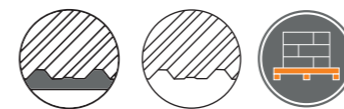


Product No	Descriptions	Length	Materials
9059-W15	EPDM, Black, 15*3 mm	25 m	EPDM
9059-W30	EPDM, Black, 30*3 mm		



S-Rail

- Suitable for all trapezoidal and sandwich roof types
- Economical, fast, easy and safe
- Accurate and economical solution thanks to 4 different height options
- Equal pressure distribution on the roof thanks to its strong and balanced structure
- Powerful wind resistance with aerodynamical design
- 1000 mm - 7000 mm length range option
- Horizontal and vertical panel placement
- %100 compatible for all solar panels
- Water sealing resistance with S-JF3 screw and EPDM tape
- Special size option on request



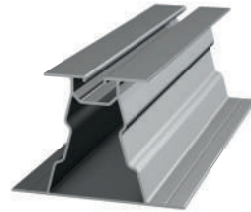
S-Rail

S-Rail 40



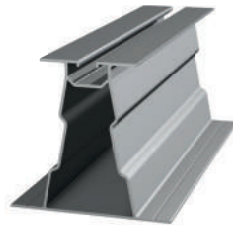
Product No	Descriptions	Weight	Materials
1001	S-Rail 40, Mill Finished	0,866 kg/m	EN AW-6063 / T66
1002	S-Rail 40, Black Anodized		

S-Rail 60



Product No	Descriptions	Weight	Materials
1003	S-Rail 60, Mill Finished	0,995 kg/m	EN AW-6063 / T66
1004	S-Rail 60, Black Anodized		

S-Rail 80



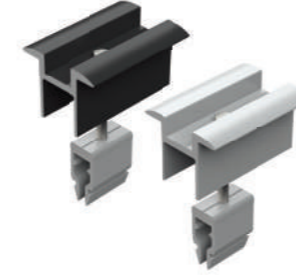
Product No	Descriptions	Weight	Materials
1005	S-Rail 80, Mill Finished	1,285 kg/m	EN AW-6063 / T66
1006	S-Rail 80, Black Anodized		

S-Rail 100



Product No	Descriptions	Weight	Materials
1007	S-Rail 100, Mill Finished	1,445 kg/m	EN AW-6063 / T66
1008	S-Rail 100, Black Anodized		

S-Clamp Mid SpeedPro



Product No	Descriptions	Length	Materials
9009	S-Clamp Mid SpeedPro, Mill Finished	60 mm	EN AW-6063 / T66
9010	S-Clamp Mid SpeedPro, Black Anodized		

*Please specify panel size on order.

S-Clamp End SpeedPro



Product No	Descriptions	Length	Materials
9011	S-Clamp End SpeedPro, Mill Finished	60 mm	EN AW-6063 / T66
9012	S-Clamp End SpeedPro, Black Anodized		

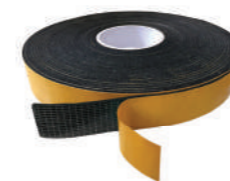
*Please specify panel size on order.

S-JF3 Screw

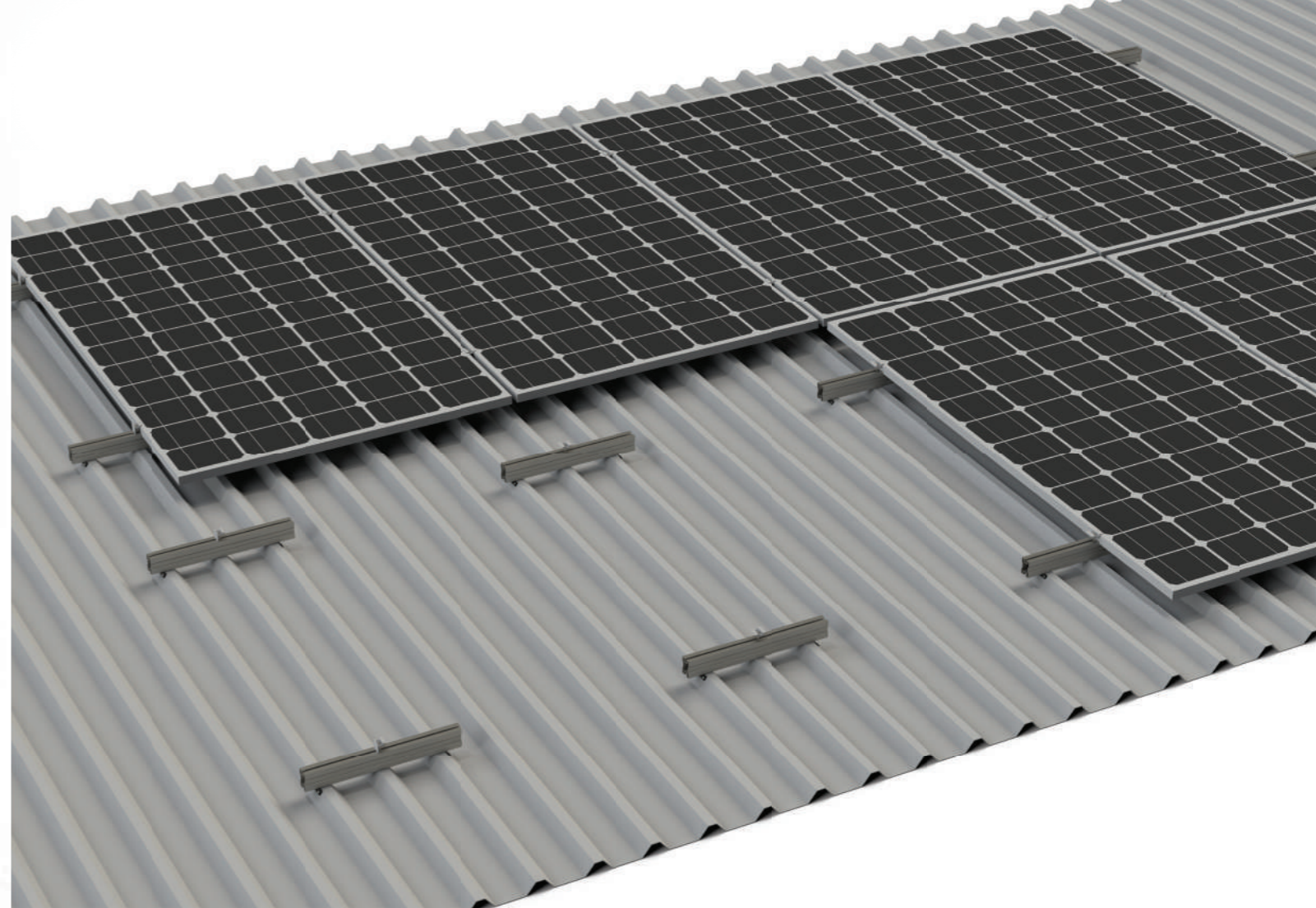


Product No	Descriptions	Length	Materials
9059	S-JF3 Screw 25 mm	25 mm	A2 Stainless Steel
9060	S-JF3 Screw 35 mm	35 mm	

EPDM Band

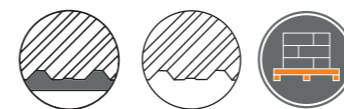


Product No	Descriptions	Length	Materials
9059-W15	EPDM, Black, 15*3 mm	25 m	EPDM
9059-W30	EPDM, Black, 30*3 mm		



S-Sprinter Eco

- Suitable for all trapezoidal and sandwich roof types
- Economical, fast, easy and safe
- Accurate and economical solution thanks to 3 different height options
- Equal pressure distribution on the roof thanks to its strong and balanced structure
- Powerful wind resistance with aerodynamical design
- 250 mm, 300 mm, 385 mm and 540 mm length options
- Horizontal and vertical panel placement
- %100 compatible for all solar panels
- Mounting from rib sides
- Water sealing resistance with S-JF3 screw and EPDM tape
- Special size option on request



S-Sprinter Eco

S-Guard 40



Product No	Descriptions	Weight	Materials
2001	S-Guard 40, Mill Finished	0,911 kg/m	EN AW-6063 / T66
2002	S-Guard 40, Black Anodized		

S-Guard 60



Product No	Descriptions	Weight	Materials
2003	S-Guard 60, Mill Finished	1,073 kg/m	EN AW-6063 / T66
2004	S-Guard 60, Black Anodized		

S-Guard 80



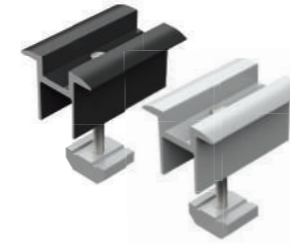
Product No	Descriptions	Weight	Materials
2005	S-Guard 80, Mill Finished	1,236 kg/m	EN AW-6063 / T66
2006	S- Guard 80, Black Anodized		

S-Shield



Product No	Descriptions	Length	Materials
9053	S-Shield	70 mm	A2 Stainless Steel

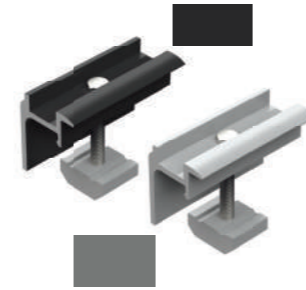
S-Clamp Mid GrandPro



Product No	Descriptions	Length	Materials
9001	S-Clamp Mid GrandPro, Mill Finished	60 mm	EN AW-6063 / T66
9002	S-Clamp Mid GrandPro, Black Anodized		

*Please specify panel size on order.

S-Clamp End GrandPro



Product No	Descriptions	Length	Materials
9003	S-Clamp End GrandPro, Mill Finished	60 mm	EN AW-6063 / T66
9004	S-Clamp End GrandPro, Black Anodized		

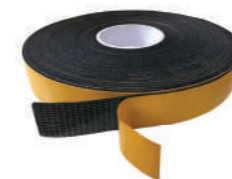
*Please specify panel size on order.

S-JF3 Screw

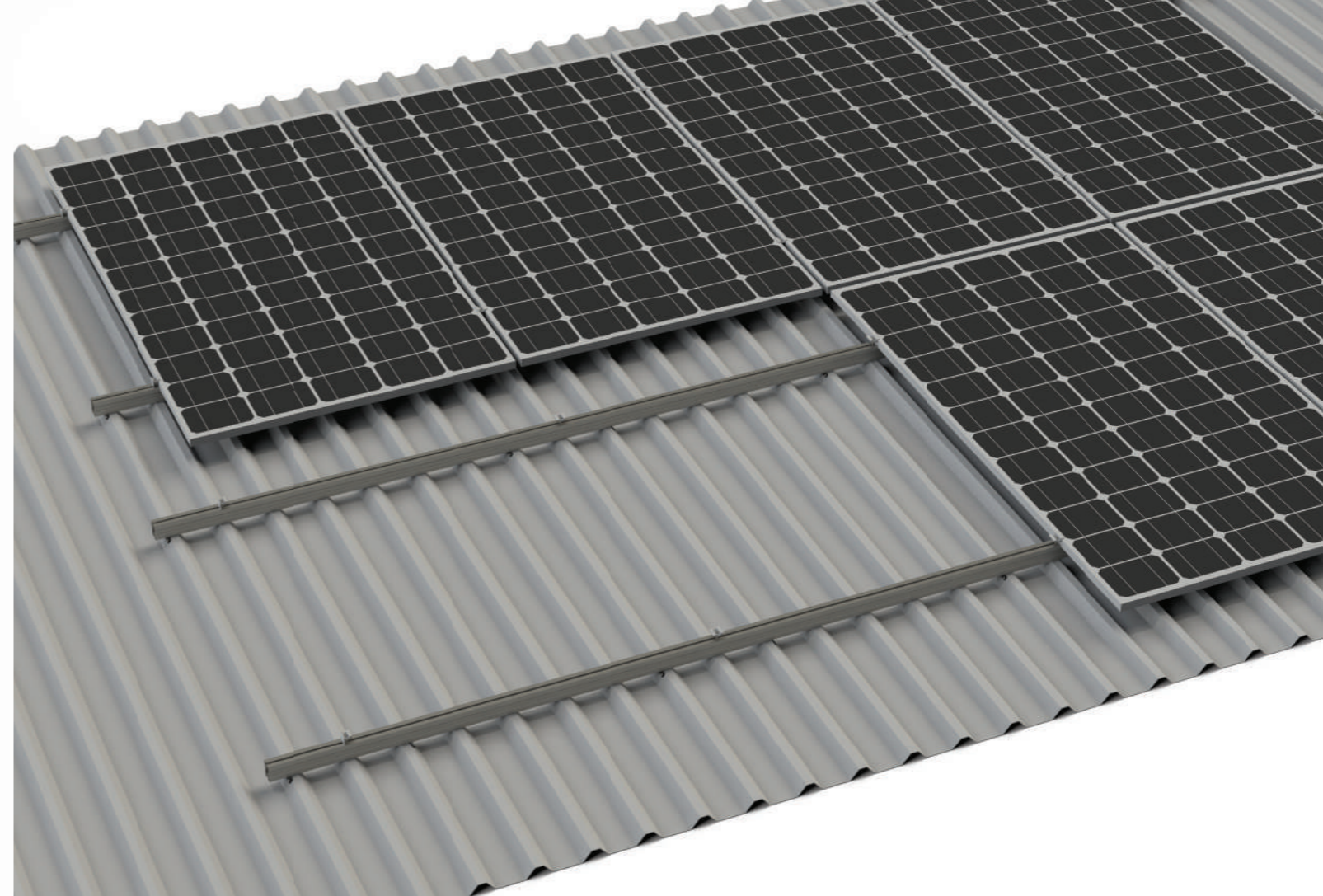


Product No	Descriptions	Length	Materials
9059	S-JF3 Screw 25 mm	25 mm	A2 Stainless Steel
9060	S-JF3 Screw 35 mm	35 mm	

EPDM Band

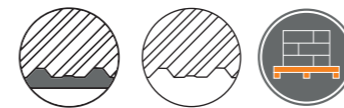


Product No	Descriptions	Length	Materials
9059-W15	EPDM, Black, 15*3 mm	25 m	EPDM
9059-W30	EPDM, Black, 30*3 mm		



S-Sprinter

- Suitable for all trapezoidal and sandwich roof types
- Economical, fast, easy and safe
- Accurate and economical solution thanks to 3 different height options
- Equal pressure distribution on the roof thanks to its strong and balanced structure
- Powerful wind resistance with aerodynamical design
- 1000 mm - 7000 mm length range option
- Horizontal and vertical panel placement
- %100 compatible for all solar panels
- Mounting from rib sides
- Water sealing resistance with S-JF3 screw and EPDM tape
- Special size option on request



S-Sprinter

S-Guard 40



Product No	Descriptions	Weight	Özellikler
2001	S-Guard 40, Mill Finished	0,911 kg/m	EN AW-6063 / T66
2002	S-Guard 40, Black Anodized		

S-Guard 60



Product No	Descriptions	Weight	Özellikler
2003	S-Guard 60, Mill Finished	1,073 kg/m	EN AW-6063 / T66
2004	S-Guard 60, Black Anodized		

S-Guard 80



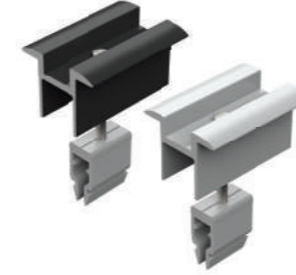
Product No	Descriptions	Weight	Özellikler
2005	S-Rail 80, Mill Finished	1,236 kg/m	EN AW-6063 / T66
2006	S-Rail 80, Black Anodized		

S-Shield



Product No	Descriptions	Length	Özellikler
9053	S-Shield	70 mm	A2 Paslanmaz Çelik

S-Clamp Mid SpeedPro



Product No	Descriptions	Length	Materials
9009	S-Clamp Mid SpeedPro, Mill Finished	60 mm	EN AW-6063 / T66
9010	S-Clamp Mid SpeedPro, Black Anodized		

*Please specify panel size on order.

S-Clamp End SpeedPro



Product No	Descriptions	Length	Materials
9011	S-Clamp End SpeedPro, Mill Finished	60 mm	EN AW-6063 / T66
9012	S-Clamp End SpeedPro, Black Anodized		

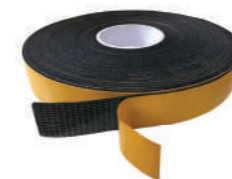
*Please specify panel size on order.

S-JF3 Screw

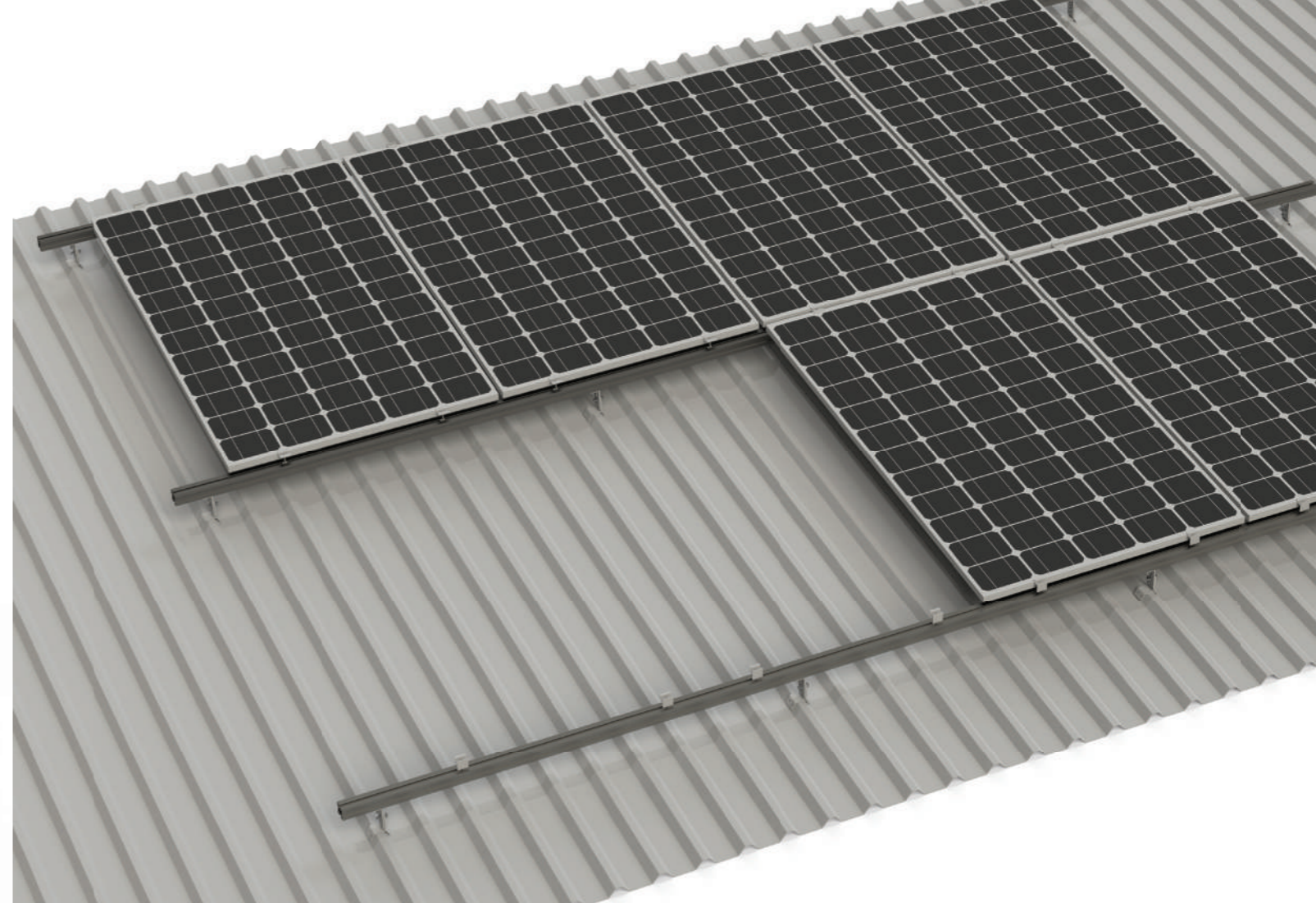


Product No	Descriptions	Length	Materials
9059	S-JF3 Screw 25 mm	25 mm	A2 Stainless Steel
9060	S-JF3 Screw 35 mm	35 mm	

EPDM Band



Product No	Descriptions	Length	Materials
9059-W15	EPDM, Black, 15*3 mm	25 m	EPDM
9059-W30	EPDM, Black, 30*3 mm		



S-Pro

- Suitable for all trapezoidal and sandwich roof types
- Economical, fast, easy and safe
- Accurate and economical solution thanks to 3 different height options
- Equal pressure distribution on the roof thanks to its strong and balanced structure
- Powerful wind resistance with aerodynamical design
- 1000 mm - 7000 mm length range option
- Horizontal and vertical panel placement
- %100 compatible for all solar panels
- Adjustable height against roof fluctuations
- Mounting from rib sides
- Water sealing resistance with S-JF3 screw and EPDM tape
- Possibility of custom design for different pitch widths upon request
- Special size option on request



S-Pro

S-Pro



Product No	Descriptions	Rib Width	Materials
3001	S-Pro 25, Mill Finished	25 mm	EN AW-6063 / T66
3002	S-Pro 37, Mill Finished	37 mm	
3003	S-Pro 45, Mill Finished	45 mm	
3004	S-Pro 71, Mill Finished	71 mm	

S-Guard 40



Product No	Descriptions	Weight	Materials
2001	S-Guard 40, Mill Finished	0,911 kg/m	EN AW-6063 / T66
2002	S-Guard 40, Black Anodized		

S-Guard 60



Product No	Descriptions	Weight	Materials
2003	S-Guard 60, Mill Finished	1,073 kg/m	EN AW-6063 / T66
2004	S-Guard 60, Black Anodized		

S-Guard 80



Product No	Descriptions	Weight	Materials
2005	S-Rail 80, Mill Finished	1,236 kg/m	EN AW-6063 / T66
2006	S-Rail 80, Black Anodized		

S-Clamp Mid SpeedPro



Product No	Descriptions	Length	Materials
9009	S-Clamp Mid SpeedPro, Mill Finished	60 mm	EN AW-6063 / T66
9010	S-Clamp Mid SpeedPro, Black Anodized		

*Please specify panel size on order.

S-Clamp End SpeedPro



Product No	Descriptions	Length	Materials
9011	S-Clamp End SpeedPro, Mill Finished	60 mm	EN AW-6063 / T66
9012	S-Clamp End SpeedPro, Black Anodized		

*Please specify panel size on order.

S-JF3 Screw



Product No	Descriptions	Length	Materials
9059	S-JF3 Screw 25 mm	25 mm	A2 Stainless Steel
9060	S-JF3 Screw 35 mm	35 mm	

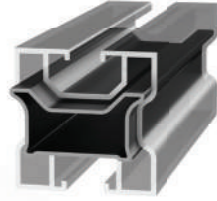
EPDM Band



Product No	Descriptions	Length	Materials
9059-W15	EPDM, Black, 15*3 mm	25 m	EPDM
9059-W30	EPDM, Black, 30*3 mm		

S-Pro

S-Guard Connector



Product No	Descriptions	Length	Materials
9041	S-Guard 40 Connector, Mill Finished	200 mm	EN AW-6063 / T66
9042	S-Guard 60 Connector, Mill Finished		
9043	S-Guard 80 Connector, Mill Finished		

S-Grounding



Product No	Descriptions	Length	Materials
9031	S-Grounding, Mill Finished	35 mm	EN AW-6063 / T66
9032	S-Grounding, Black Anodized		

S-Defender



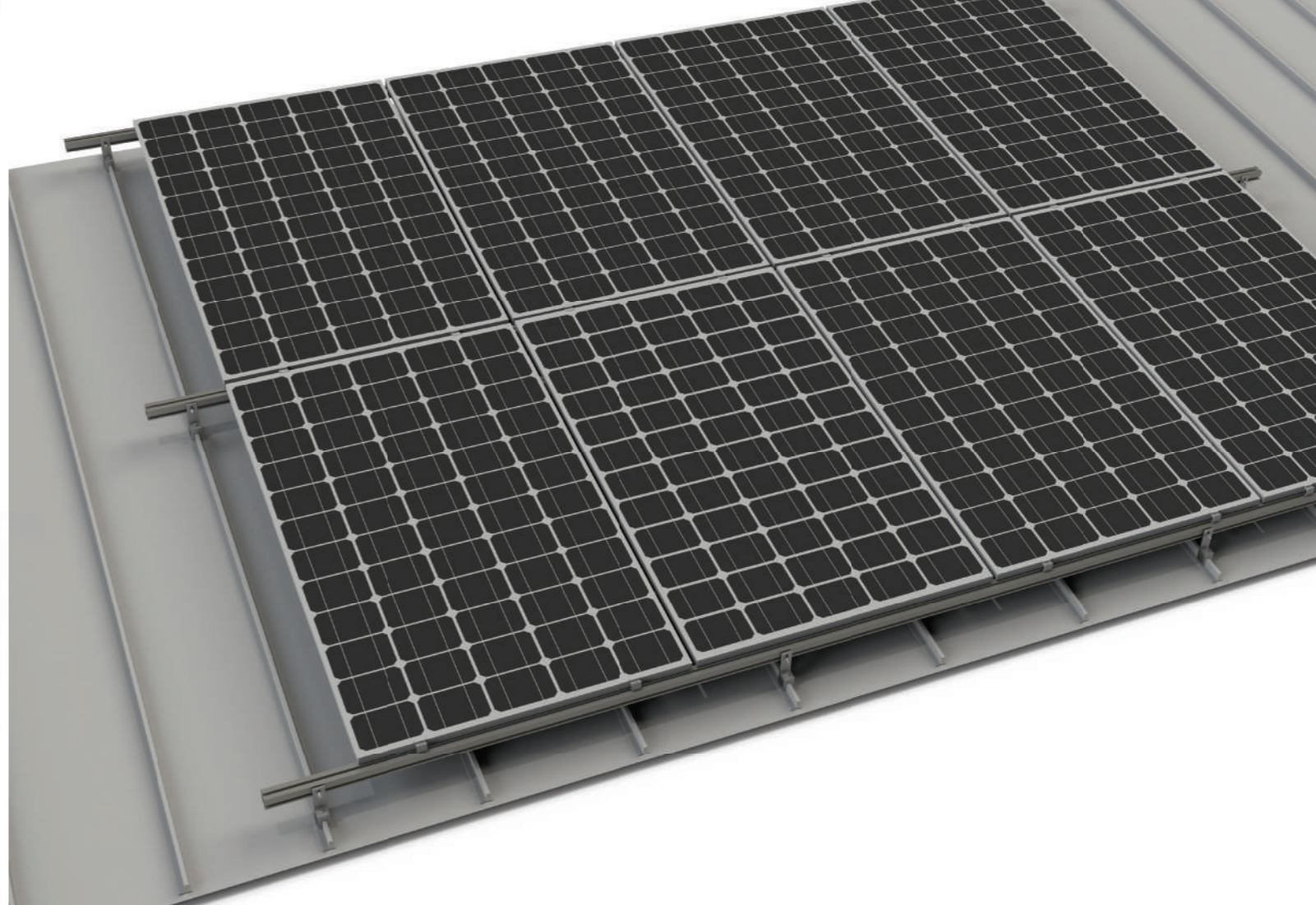
Product No	Descriptions	Length	Materials
9029	S-Defender, Mill Finished	70 mm	EN AW-6063 / T66
9030	S-Defender, Black Anodized		

Fast, easy and secure connection from clamp ports
 Large support area for solar panels
 Compatible with All Standart Aluminium Solar Systems

S-Guard End Cap

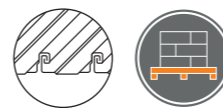


Product No	Descriptions	Colour	Materials
9047	S-Guard 40 End Cap	Black	Poliamid
9048	S-Guard 60 End Cap		
9049	S-Guard 80 End Cap		



S-Lock Ultimate Edition

- Suitable for metal roof types
- Economical, fast, easy and safe
- Accurate and economical solution thanks to 3 different height options
- Competitive pricing with minimized rail and accessory usage
- Equal pressure distribution on the roof thanks to its strong and balanced structure
- Powerful wind resistance with aerodynamical design
- 1000 mm - 7000 mm length range option
- Horizontal and vertical panel placement
- %100 compatible for all solar panels
- Up to +50% increase in assembly speed thanks to side rail connection
- Adjustable height against roof fluctuations



S-Lock Ultimate Edition

S-Lock



Product No	Descriptions	Length	Materials
4001	S-Lock, Mill Finished	40 mm	EN AW-6063 / T66
4002	S-Lock, Black Anodized		

S-L Foot



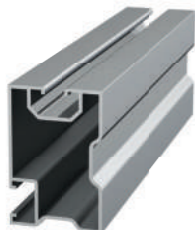
Product No	Descriptions	Length	Materials
9012	S-L Foot, Mill Finished	35 mm	EN AW-6063 / T66
9013	S-L Foot, Black Anodized		

S-Armor 40



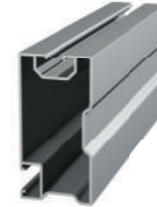
Product No	Descriptions	Weight	Materials
2007	S-Armor 40, Mill Finished	0,859 kg	EN AW-6063 / T66
2008	S-Armor 40, Black Anodized		

S-Armor 60



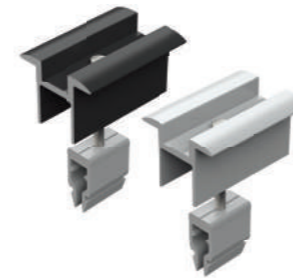
Product No	Descriptions	Weight	Materials
2009	S-Armor 60, Mill Finished	1,022kg	EN AW-6063 / T66
2010	S-Armor 60, Black Anodized		

S-Armor 80



Product No	Descriptions	Length	Materials
2011	S-Armor 80, Mill Finished	1,185 kg	EN AW-6063 / T66
2012	S-Armor 80, Black Anodized		

S-Clamp Mid SpeedPro



Product No	Descriptions	Length	Materials
9009	S-Clamp Mid SpeedPro, Mill Finished	60 mm	EN AW-6063 / T66
9010	S-Clamp Mid SpeedPro, Black Anodized		

*Please specify panel size on order.

S-Clamp End SpeedPro

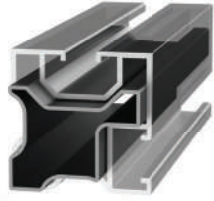


Product No	Descriptions	Length	Materials
9011	S-Clamp End SpeedPro, Mill Finished	60 mm	EN AW-6063 / T66
9012	S-Clamp End SpeedPro, Black Anodized		

*Please specify panel size on order.

S-Lock Ultimate Edition

S-Armor Connector



Product No	Descriptions	Length	Materials
9044	S-Armor 40 Connector, Mill Finished	200 mm	EN AW-6063 / T66
9045	S-Armor 60 Connector, Mill Finished		
9046	S-Armor 80 Connector, Mill Finished		

S-Grounding



Product No	Descriptions	Length	Materials
9031	S-Grounding, Mill Finished	35 mm	EN AW-6063 / T66
9032	S-Grounding, Black Anodized		

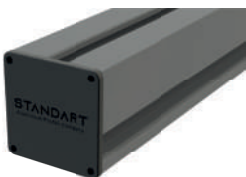
S-Defender



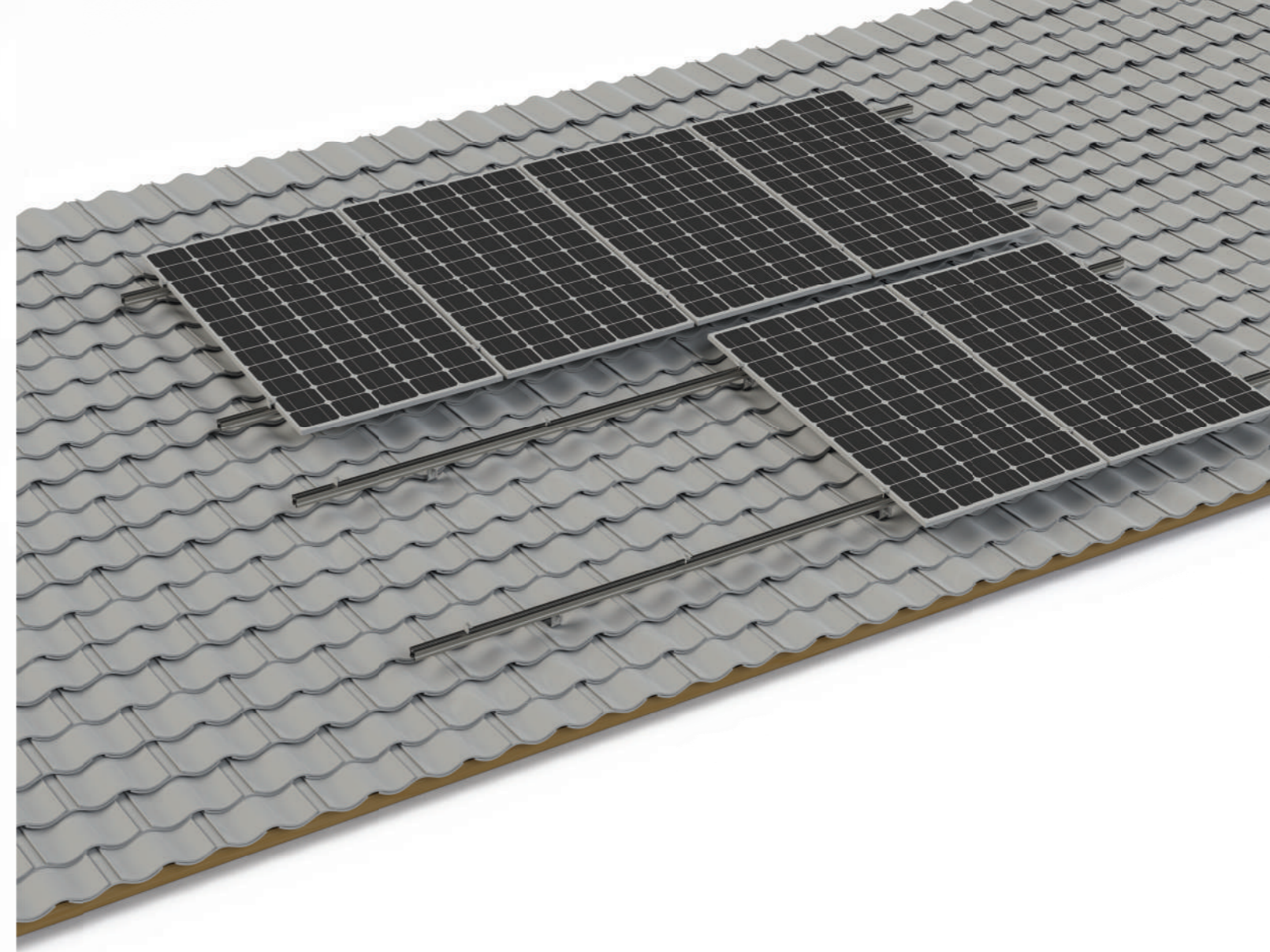
Product No	Descriptions	Length	Materials
9029	S-Defender, Mill Finished	70 mm	EN AW-6063 / T66
9030	S-Defender, Black Anodized		

Fast, easy and secure connection from clamp ports
 Large support area for solar panels
 Compatible with All Standart Aluminium Solar Systems

S-Armor End Cap



Product No	Descriptions	Colour	Materials
9050	S-Armor 40 End Cap	Black	Poliamid
9051	S-Armor 60 End Cap		
9052	S-Armor 80 End Cap		



S-Tile Fundamental+

- Suitable for tile roof types
- Economical, fast, easy and safe
- Accurate and economical solution thanks to 3 different height options
- Equal pressure distribution on the roof thanks to its strong and balanced structure
- Powerful wind resistance with aerodynamical design
- Adjustable height against roof fluctuations
- Adjustable height against tile heights
- Horizontal and vertical panel placement
- %100 compatible for all solar panels
- Special size option on request



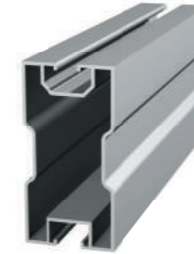
S-Tile Fundamental+

S-Tile Hook



Product No	Descriptions	Thickness	Materials
9097	S-Tile Hook, 4 mm	4 mm	A2 Stainless Steel

S-Guard 80



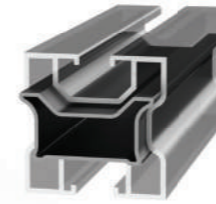
Product No	Descriptions	Length	Materials
2005	S-Guard 80, Mill Finished	1,236 kg/m	EN AW-6063 / T66
2006	S-Guard 80, Black Anodized		

S-Tile Hook Screw



Product No	Descriptions	Length	Materials
9098	S-Tile Hook Screw, 6 cm	60 mm	A2 Stainless Steel

S-Guard Connector



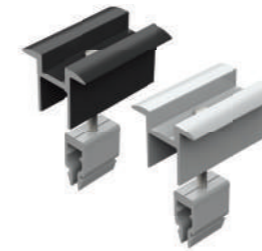
Product No	Descriptions	Length	Materials
9041	S-Guard 40 Connector, Mill Finished	200 mm	EN AW-6063 / T66
9042	S-Guard 60 Connector, Mill Finished		
9043	S-Guard 80 Connector, Mill Finished		

S-Guard 40



Product No	Descriptions	Weight	Materials
2001	S-Guard 40, Mill Finished	0,911 kg/m	EN AW-6063 / T66
2002	S-Guard 40, Black Anodized		

S-Clamp Mid SpeedPro



Product No	Descriptions	Length	Materials
9009	S-Clamp Mid SpeedPro, Mill Finished	60 mm	EN AW-6063 / T66
9010	S-Clamp Mid SpeedPro, Black Anodized		

*Please specify panel size on order.

S-Guard 60



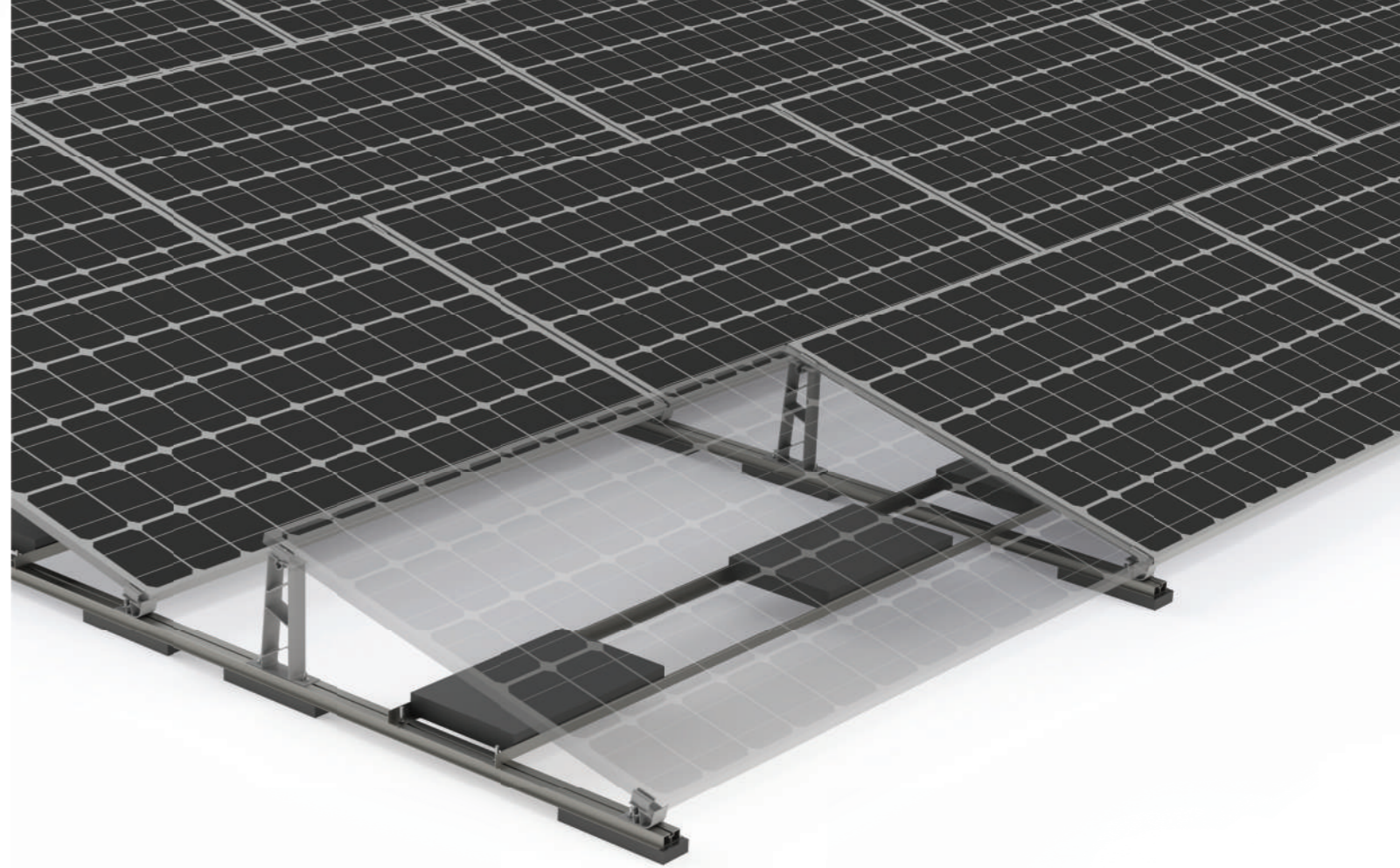
Product No	Descriptions	Weight	Materials
2003	S-Guard 60, Mill Finished	1,073 kg/m	EN AW-6063 / T66
2004	S-Guard 60, SBlack Anodized		

S-Clamp End SpeedPro



Product No	Descriptions	Length	Materials
9011	S-Clamp End SpeedPro, Mill Finished	60 mm	EN AW-6063 / T66
9012	S-Clamp End SpeedPro, Black Anodized		

*Please specify panel size on order.



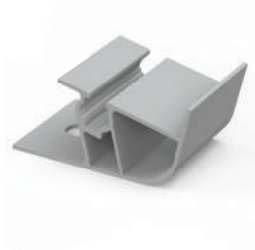
S-Flat Hybrid+ S13

- Suitable for flat roof types
- Suitable for 13° South placement
- Economical, fast, easy and safe
- Competitive pricing with minimized rail and accessory usage
- Fixation by ballasting weight method with stones suitable for static values without drilling
- Equal pressure distribution on the roof thanks to its strong and balanced structure
- Up to +30% increase in assembly speed thanks to one piece towers
- Powerful wind resistance with aerodynamical design
- Available LS Edition for long side mounting
- Horizontal and vertical panel placement
- %100 compatible for all solar panel
- Special size option on request



S-Flat Hybrid+ S13

S-Tower Bottom



Product No	Descriptions	Length	Materials
5001	S-Tower Bottom, Mill Finished	80 mm	EN AW-6063 / T66
5002	S-Tower Bottom, Black Anodized		

S-Tower Top



Product No	Descriptions	Length	Materials
5003	S-Tower Top, Mill Finished	80 mm	EN AW-6063 / T66
5004	S-Tower Top, Black Anodized		

S-Flat Base



Product No	Descriptions	Weight	Materials
5005	S-Flat Base, Mill Finished	1,268 kg/m	EN AW-6063 / T66
5006	S-Flat Base, Black Anodized		

S-Flat Base Connector



Product No	Descriptions	Length	Materials
5007	S-Flat Base Connector, Mill Finished	200 mm	EN AW-6063 / T66
5008	S-Flat Base Connector, Black Anodized		

S-Clamp Mid SpeedPro



Product No	Descriptions	Length	Materials
9009	S-Clamp Mid SpeedPro, Mill Finished	60 mm	EN AW-6063 / T66
9010	S-Clamp Mid SpeedPro, Black Anodized		

*Please specify panel size on order.

S-Clamp End SpeedPro



Product No	Descriptions	Length	Materials
9011	S-Clamp End SpeedPro, Mill Finished	60 mm	EN AW-6063 / T66
9012	S-Clamp End SpeedPro, Black Anodized		

*Please specify panel size on order.

S-Flat L



Product No	Descriptions	Weight	Materials
5009	S-Flat L, Mill Finished	0,626 kg	EN AW-6063 / T66
5010	S-Flat L, Black Anodized		

S-JT4 Screw



Product No	Descriptions	Length	Materials
9061	S-JT4 Screw 22 mm	22 mm	A2 Stainless Steel



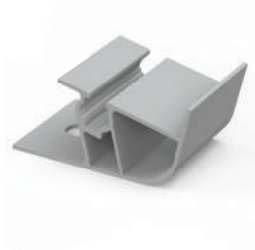
S-Flat Hybrid+ EW13

- Suitable for flat roof types
- Suitable for 13° East-West placement
- Economical, fast, easy and safe
- Competitive pricing with minimized rail and accessory usage
- Fixation by ballasting weight method with stones suitable for static values without drilling
- Equal pressure distribution on the roof thanks to its strong and balanced structure
- Up to +30% increase in assembly speed thanks to one piece towers
- Powerful wind resistance with aerodynamical design
- Available LS Edition for long side mounting
- Horizontal and vertical panel placement
- %100 compatible for all solar panels
- Special size option on request



S-Flat Hybrid+ EW13

S-Tower Bottom



Product No	Descriptions	Length	Materials
5001	S-Tower Bottom, Mill Finished	80 mm	EN AW-6063 / T66
5002	S-Tower Bottom, Black Anodized		

S-Tower Top



Product No	Descriptions	Length	Materials
5003	S-Tower Top, Mill Finished	80 mm	EN AW-6063 / T66
5004	S-Tower Top, Black Anodized		

S-Flat Base



Product No	Descriptions	Weight	Materials
5005	S-Flat Base, Mill Finished	1,268 kg/m	EN AW-6063 / T66
5006	S-Flat Base, Black Anodized		

S-Flat Base Connector



Product No	Descriptions	Length	Materials
5007	S-Flat Base Connector, Mill Finished	200 mm	EN AW-6063 / T66
5008	S-Flat Base Connector, Black Anodized		

S-Clamp Mid SpeedPro



Product No	Descriptions	Length	Materials
9009	S-Clamp Mid SpeedPro, Mill Finished	60 mm	EN AW-6063 / T66
9010	S-Clamp Mid SpeedPro, Black Anodized		

*Please specify panel size on order.

S-Clamp End SpeedPro



Product No	Descriptions	Length	Materials
9011	S-Clamp End SpeedPro, Mill Finished	60 mm	EN AW-6063 / T66
9012	S-Clamp End SpeedPro, Black Anodized		

*Please specify panel size on order.

S-Flat L

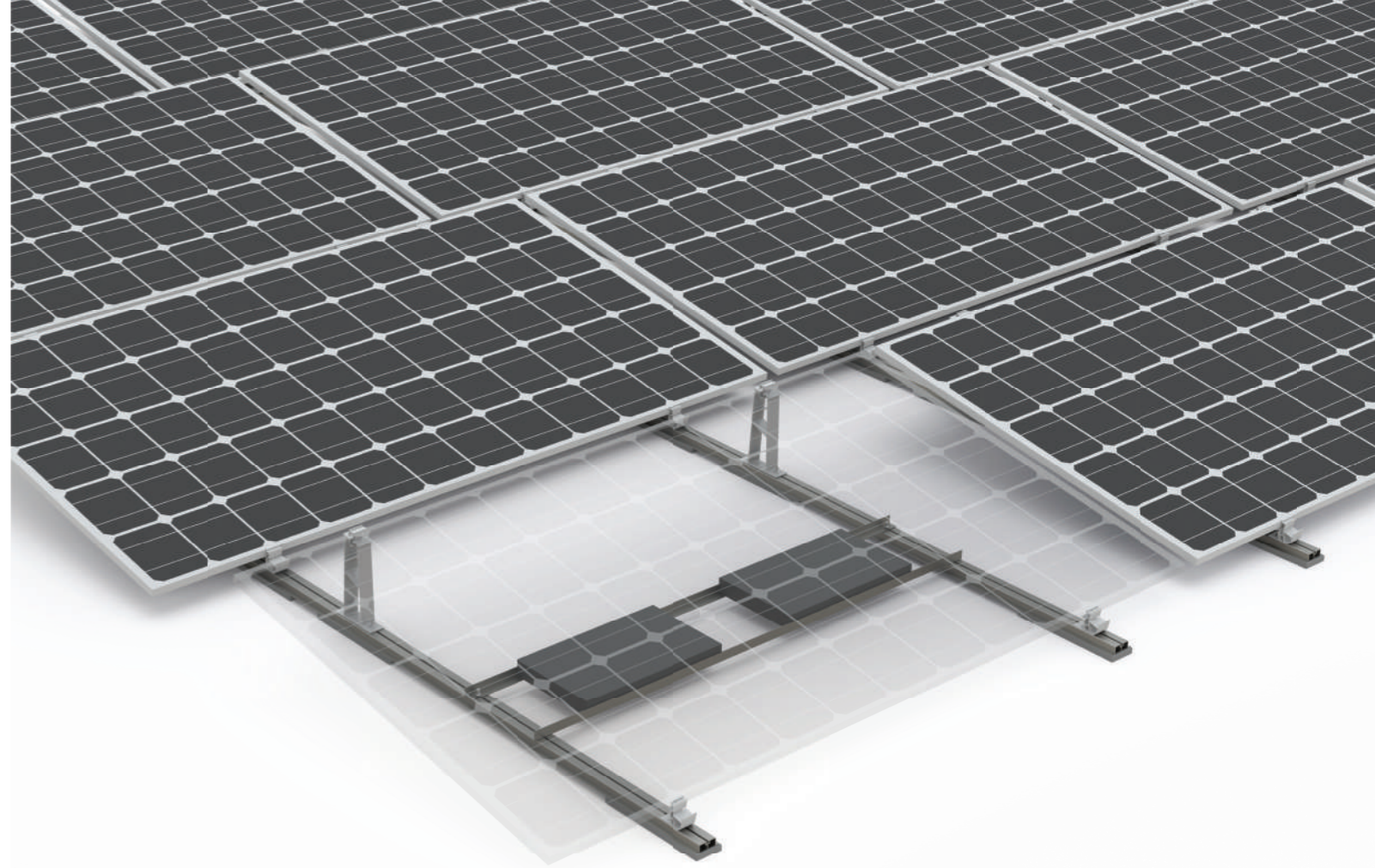


Product No	Descriptions	Weight	Materials
5009	S-Flat L, Mill Finished	0,626 kg	EN AW-6063 / T66
5010	S-Flat L, Black Anodized		

S-JT4 Screw



Product No	Descriptions	Length	Materials
9061	S-JT4 Screw 22 mm	22 mm	A2 Stainless Steel



S-Flat Hybrid+ S13 LS Edition

- Suitable for flat roof types
- Suitable for 13° South placement
- Economical, fast, easy and safe
- Competitive pricing with minimized rail and accessory usage
- Fixation by ballasting weight method with stones suitable for static values without drilling
- Equal pressure distribution on the roof thanks to its strong and balanced structure
- Up to +30% increase in assembly speed thanks to one piece towers
- Powerful wind resistance with aerodynamical design
- Available LS Edition for long side mounting
- Horizontal and vertical panel placement
- %100 compatible for all solar panels
- Special size option on request



S-Flat Hybrid+ S13 LS Edition

S-Tower Bottom



Product No	Descriptions	Length	Materials
5001	S-Tower Bottom, Mill Finished	80 mm	EN AW-6063 / T66
5002	S-Tower Bottom, Black Anodized		

S-Tower Top



Product No	Descriptions	Length	Materials
5003	S-Tower Top, Mill Finished	80 mm	EN AW-6063 / T66
5004	S-Tower Top, Black Anodized		

S-Flat Base



Product No	Descriptions	Weight	Materials
5005	S-Flat Base, Mill Finished	1,268 kg/m	EN AW-6063 / T66
5006	S-Flat Base, Black Anodized		

S-Flat Base Connector



Product No	Descriptions	Length	Materials
5007	S-Flat Base Connector, Mill Finished	200 mm	EN AW-6063 / T66
5008	S-Flat Base Connector, Black Anodized		

S-Clamp End SpeedPro



Product No	Descriptions	Length	Materials
9011	S-Clamp End SpeedPro, Mill Finished	60 mm	EN AW-6063 / T66
9012	S-Clamp End SpeedPro, Black Anodized		

*Please specify panel size on order.

S-Flat L

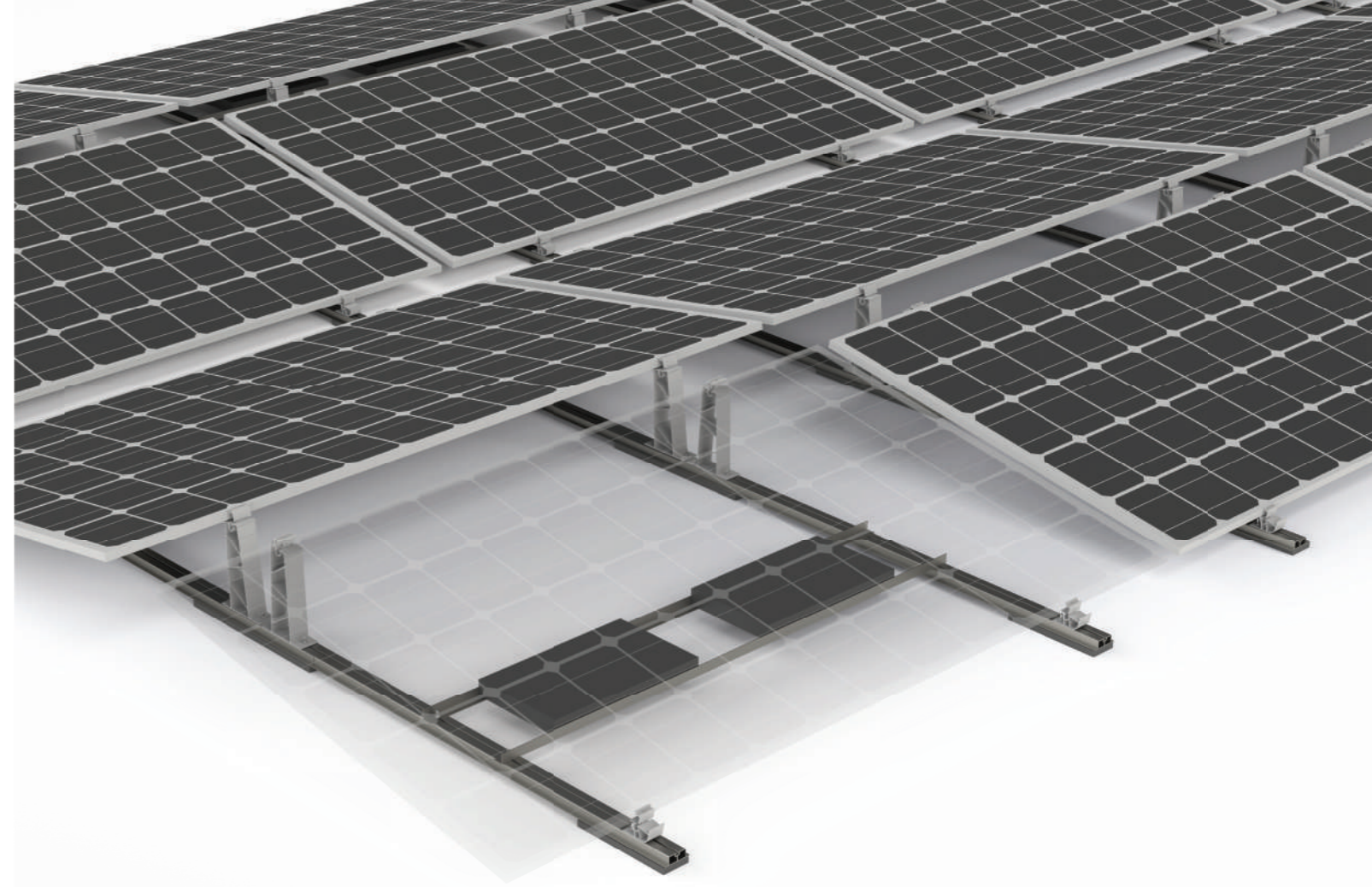


Product No	Descriptions	Weight	Materials
5009	S-Flat L, Mill Finished	0,626 kg	EN AW-6063 / T66
5010	S-Flat L, Black Anodized		

S-JT4 Screw



Product No	Descriptions	Length	Materials
9061	S-JT4 Screw 22 mm	22 mm	A2 Stainless Steel



S-Flat Hybrid+ EW13 LS Edition

- Suitable for flat roof types
- Suitable for 13° East-West placement
- Economical, fast, easy and safe
- Competitive pricing with minimized rail and accessory usage
- Fixation by ballasting weight method with stones suitable for static values without drilling
- Equal pressure distribution on the roof thanks to its strong and balanced structure
- Up to +30% increase in assembly speed thanks to one piece towers
- Powerful wind resistance with aerodynamical design
- Available LS Edition for long side mounting
- Horizontal and vertical panel placement
- %100 compatible for all solar panels
- Special size option on request



S-Flat Hybrid+ EW13 LS Edition

S-Tower Bottom



Product No	Descriptions	Length	Materials
5001	S-Tower Bottom, Mill Finished	80 mm	EN AW-6063 / T66
5002	S-Tower Bottom, Black Anodized		

S-Tower Top



Product No	Descriptions	Length	Materials
5003	S-Tower Top, Mill Finished	80 mm	EN AW-6063 / T66
5004	S-Tower Top, Black Anodized		

S-Flat Base



Product No	Descriptions	Weight	Materials
5005	S-Flat Base, Mill Finished	1,268 kg/m	EN AW-6063 / T66
5006	S-Flat Base, Black Anodized		

S-Flat Base Connector



Product No	Descriptions	Length	Materials
5007	S-Flat Base Connector, Mill Finished	200 mm	EN AW-6063 / T66
5008	S-Flat Base Connector, Black Anodized		

S-Clamp End SpeedPro



Product No	Descriptions	Length	Materials
9011	S-Clamp End SpeedPro, Mill Finished	60 mm	EN AW-6063 / T66
9012	S-Clamp End SpeedPro, Black Anodized		

*Please specify panel size on order.

S-Flat L



Product No	Descriptions	Weight	Materials
5009	S-Flat L, Mill Finished	0,626 kg	EN AW-6063 / T66
5010	S-Flat L, Black Anodized		

S-JT4 Screw



Product No	Descriptions	Length	Materials
9061	S-JT4 Screw 22 mm	22 mm	A2 Stainless Steel



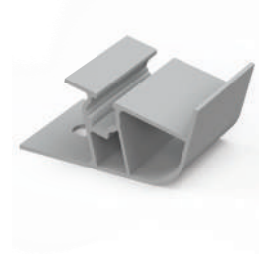
S-Flat Membrane S13

- Suitable for flat membrane roof types
- Suitable for 13° South placement
- Economical, fast, easy and safe
- Competitive pricing with minimized rail and accessory usage
- Fixation by ballasting weight method with stones suitable for static values without drilling
- Equal pressure distribution on the roof thanks to its strong and balanced structure
- Up to +30% increase in assembly speed thanks to one piece towers
- Powerful wind resistance with aerodynamical design
- Available LS Edition for long side mounting
- Horizontal and vertical panel placement
- %100 compatible for all solar panels
- Special size option on request



S-Flat Membrane S13

S-Tower Bottom



Ürün Kodu	Ürün Açıklaması	Uzunluk	Özellikler
5001	S-Tower Bottom, Mill Finished	80 mm	EN AW-6063 / T66
5002	S-Tower Bottom, Black Anodized		

S-Tower Top



Ürün Kodu	Ürün Açıklaması	Uzunluk	Özellikler
5003	S-Tower Top, Mill Finished	80 mm	EN AW-6063 / T66
5004	S-Tower Top, Black Anodized		

S-Flat Base



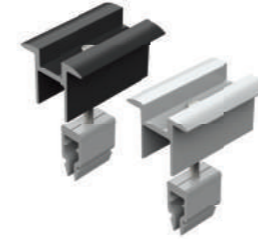
Ürün Kodu	Ürün Açıklaması	Gramaj	Özellikler
5005	S-Flat Base, Mill Finished	1,268 kg/m	EN AW-6063 / T66
5006	S-Flat Base, Black Anodized		

S-Flat Base Connector



Ürün Kodu	Ürün Açıklaması	Uzunluk	Özellikler
5007	S-Flat Base Connector, Mill Finished	200 mm	EN AW-6063 / T66
5008	S-Flat Base Connector, Black Anodized		

S-Clamp Mid SpeedPro



Ürün Kodu	Ürün Açıklaması	Uzunluk	Özellikler
9009	S-Clamp Mid SpeedPro, Mill Finished	60 mm	EN AW-6063 / T66
9010	S-Clamp Mid SpeedPro, Siyah Eloksal		

*Please specify panel size on order.

S-Clamp End SpeedPro



Ürün Kodu	Ürün Açıklaması	Uzunluk	Özellikler
9011	S-Clamp End SpeedPro, Mill Finished	60 mm	EN AW-6063 / T66
9012	S-Clamp End SpeedPro, Black Anodized		

*Please specify panel size on order.

S-Ejobar



Ürün Kodu	Ürün Açıklaması	Uzunluk	Özellikler
5009	S-Ejobar, PVC	50 cm	PVC
5010	S-Ejobar, TPO		TPO

S-JF3 Vida



Ürün Kodu	Ürün Açıklaması	Uzunluk	Özellikler
9059	S-JF3 Vida 25 mm	25 mm	A2 Stainless Steel
9060	S-JF3 Vida 35 mm	35 mm	



S-Flat Membrane EW13

- Suitable for flat membrane roof types
- Suitable for 13° East-West placement
- Economical, fast, easy and safe
- Competitive pricing with minimized rail and accessory usage
- Fixation by ballasting weight method with stones suitable for static values without drilling
- Equal pressure distribution on the roof thanks to its strong and balanced structure
- Up to +30% increase in assembly speed thanks to one piece towers
- Powerful wind resistance with aerodynamical design
- Available LS Edition for long side mounting
- Horizontal and vertical panel placement
- %100 compatible for all solar panels
- Special size option on request



S-Flat Membrane EW13

S-Tower Bottom



Ürün Kodu	Ürün Açıklaması	Uzunluk	Özellikler
5001	S-Tower Bottom, Mill Finished	80 mm	EN AW-6063 / T66
5002	S-Tower Bottom, Black Anodized		

S-Tower Top



Ürün Kodu	Ürün Açıklaması	Uzunluk	Özellikler
5003	S-Tower Top, Mill Finished	80 mm	EN AW-6063 / T66
5004	S-Tower Top, Black Anodized		

S-Flat Base



Ürün Kodu	Ürün Açıklaması	Gramaj	Özellikler
5005	S-Flat Base, Mill Finished	1,268 kg/m	EN AW-6063 / T66
5006	S-Flat Base, Black Anodized		

S-Flat Base Connector



Ürün Kodu	Ürün Açıklaması	Uzunluk	Özellikler
5007	S-Flat Base Connector, Mill Finished	200 mm	EN AW-6063 / T66
5008	S-Flat Base Connector, Black Anodized		

S-Clamp Mid SpeedPro



Ürün Kodu	Ürün Açıklaması	Uzunluk	Özellikler
9009	S-Clamp Mid SpeedPro, Mill Finished	60 mm	EN AW-6063 / T66
9010	S-Clamp Mid SpeedPro, Black Anodized		

*Please specify panel size on order.

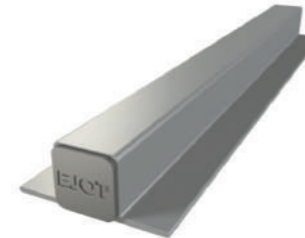
S-Clamp End SpeedPro



Ürün Kodu	Ürün Açıklaması	Uzunluk	Özellikler
9011	S-Clamp End SpeedPro, Mill Finished	60 mm	EN AW-6063 / T66
9012	S-Clamp End SpeedPro, Black Anodized		

*Please specify panel size on order.

S-Ejobar



Ürün Kodu	Ürün Açıklaması	Uzunluk	Özellikler
9092	S-Ejobar, PVC	50 cm	PVC
9093	S-Ejobar, TPO		TPO

S-JF3 Screw



Ürün Kodu	Ürün Açıklaması	Uzunluk	Özellikler
9059	S-JF3 Screw 25 mm	25 mm	A2 Paslanmaz Çelik Dış Çap: 5.5 mm Sızdırmazlık Pulu: 16 mm
9060	S-JF3 Screw 35 mm	35 mm	



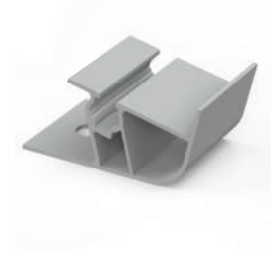
S-Flat Membrane S13 LS Edition

- Suitable for flat membrane roof types
- Suitable for 13° South placement
- Economical, fast, easy and safe
- Competitive pricing with minimized rail and accessory usage
- Fixation by ballasting weight method with stones suitable for static values without drilling
- Equal pressure distribution on the roof thanks to its strong and balanced structure
- Up to +30% increase in assembly speed thanks to one piece towers
- Powerful wind resistance with aerodynamical design
- Available LS Edition for long side mounting
- Horizontal and vertical panel placement
- %100 compatible for all solar panels
- Special size option on request



S-Flat Membrane S13 LS Edition

S-Tower Bottom



Ürün Kodu	Ürün Açıklaması	Uzunluk	Özellikler
5001	S-Tower Bottom, Mill Finished	80 mm	EN AW-6063 / T66
5002	S-Tower Bottom, Black Anodized		

S-Tower Top



Ürün Kodu	Ürün Açıklaması	Uzunluk	Özellikler
5003	S-Tower Top, Mill Finished	80 mm	EN AW-6063 / T66
5004	S-Tower Top, Black Anodized		

S-Flat Base



Ürün Kodu	Ürün Açıklaması	Gramaj	Özellikler
5005	S-Flat Base, Mill Finished	1,268 kg/m	EN AW-6063 / T66
5006	S-Flat Base, Black Anodized		

S-Flat Base Connector



Ürün Kodu	Ürün Açıklaması	Uzunluk	Özellikler
5007	S-Flat Base Connector, Mill Finished	200 mm	EN AW-6063 / T66
5008	S-Flat Base Connector, Black Anodized		

S-Clamp End SpeedPro



Ürün Kodu	Ürün Açıklaması	Uzunluk	Özellikler
9011	S-Clamp End SpeedPro, Mill Finished	60 mm	EN AW-6063 / T66
9012	S-Clamp End SpeedPro, Black Anodized		

*Please specify panel size on order.

S-Ejobar

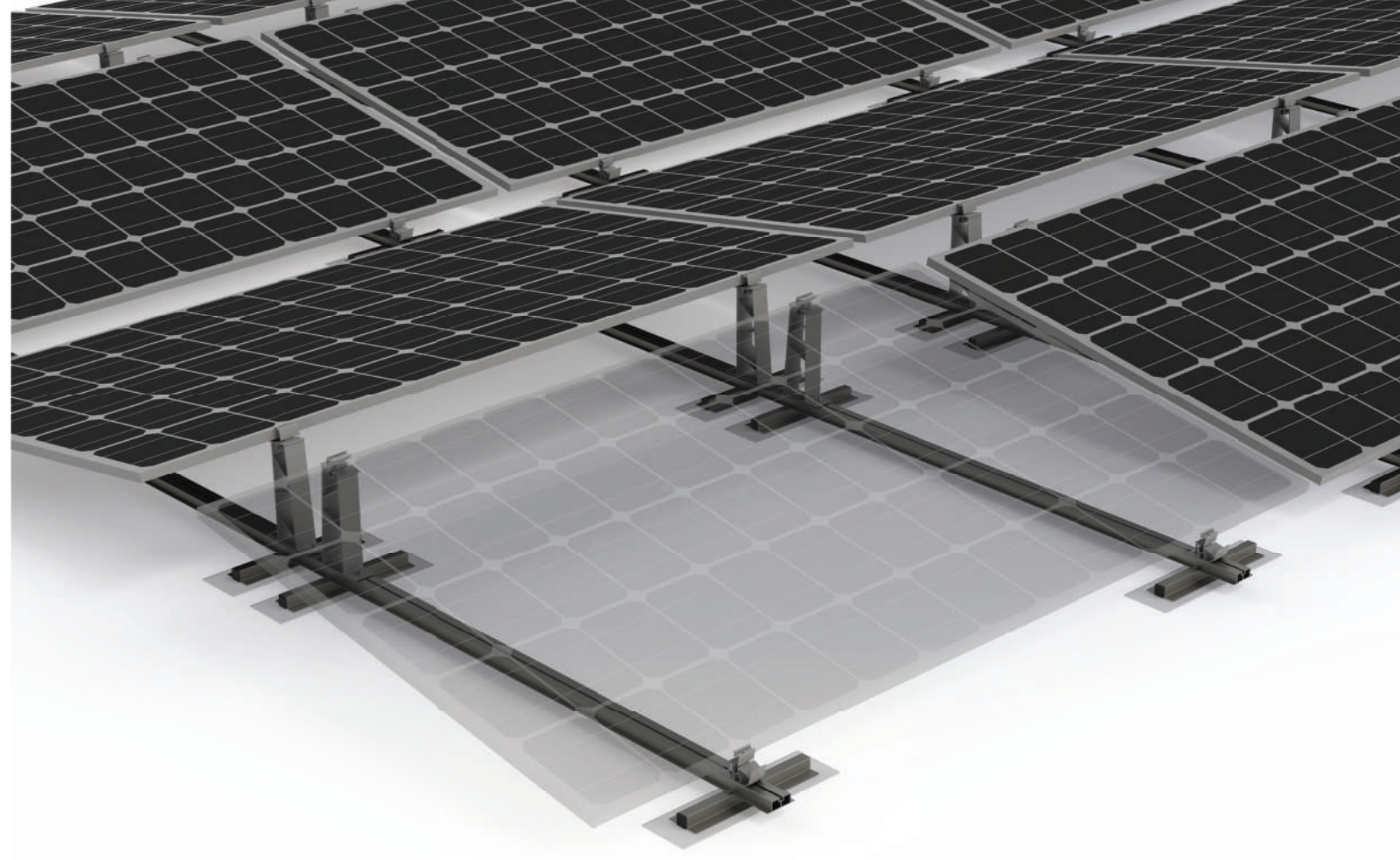


Ürün Kodu	Ürün Açıklaması	Uzunluk	Özellikler
9092	S-Ejobar, PVC	50 cm	PVC
9093	S-Ejobar, TPO		TPO

S-JF3 Screw



Ürün Kodu	Ürün Açıklaması	Uzunluk	Özellikler
9059	S-JF3 Screw 25 mm	25 mm	A2 Stainless Steel
9060	S-JF3 Screw 35 mm	35 mm	



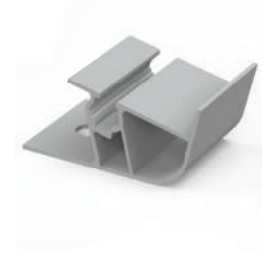
S-Flat Membrane EW13 LS Edition

- Suitable for flat membrane roof types
- Suitable for 13° East-West placement
- Economical, fast, easy and safe
- Competitive pricing with minimized rail and accessory usage
- Fixation by ballasting weight method with stones suitable for static values without drilling
- Equal pressure distribution on the roof thanks to its strong and balanced structure
- Up to +30% increase in assembly speed thanks to one piece towers
- Powerful wind resistance with aerodynamical design
- Available LS Edition for long side mounting
- Horizontal and vertical panel placement
- %100 compatible for all solar panels
- Special size option on request



S-Flat Membrane EW13 LS Edition

S-Tower Bottom



Ürün Kodu	Ürün Açıklaması	Uzunluk	Özellikler
5001	S-Tower Bottom, Mill Finished	80 mm	EN AW-6063 / T66
5002	S-Tower Bottom, Black Anodized		

S-Tower Top



Ürün Kodu	Ürün Açıklaması	Uzunluk	Özellikler
5003	S-Tower Top, Mill Finished	80 mm	EN AW-6063 / T66
5004	S-Tower Top, Black Anodized		

S-Flat Base



Ürün Kodu	Ürün Açıklaması	Gramaj	Özellikler
5005	S-Flat Base, Mill Finished	1,268 kg/m	EN AW-6063 / T66
5006	S-Flat Base, Black Anodized		

S-Flat Base Connector



Ürün Kodu	Ürün Açıklaması	Uzunluk	Özellikler
5007	S-Flat Base Connector, Mill Finished	200 mm	EN AW-6063 / T66
5008	S-Flat Base Connector, Black Anodized		

S-Clamp End SpeedPro



Ürün Kodu	Ürün Açıklaması	Uzunluk	Özellikler
9011	S-Clamp End SpeedPro, Mill Finished	60 mm	EN AW-6063 / T66
9012	S-Clamp End SpeedPro, Black Anodized		

*Please specify panel size on order.

S-Ejobar

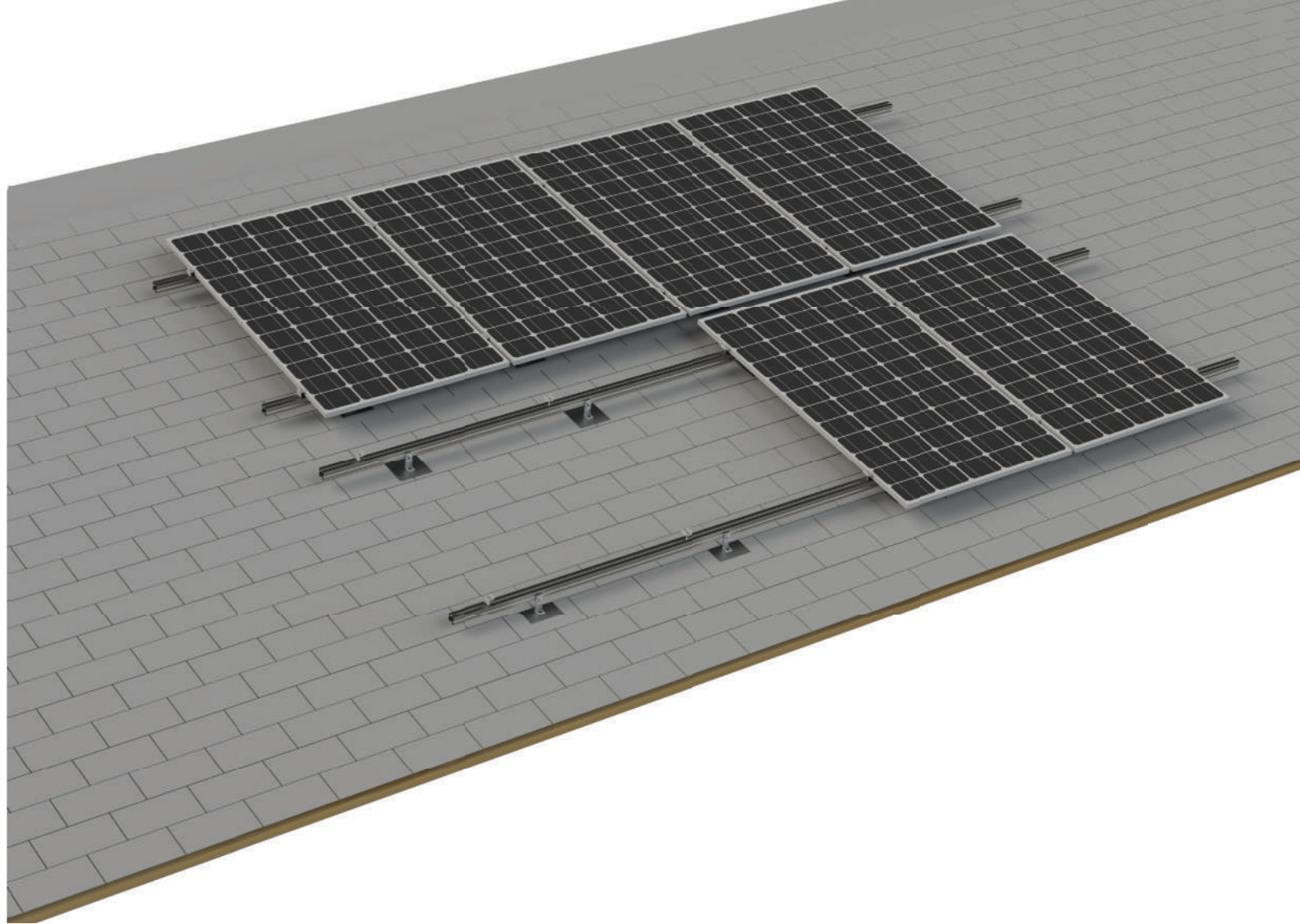


Ürün Kodu	Ürün Açıklaması	Uzunluk	Özellikler
9092	S-Ejobar, PVC	50 cm	PVC
9093	S-Ejobar, TPO		TPO

S-JF3 Screw



Ürün Kodu	Ürün Açıklaması	Uzunluk	Özellikler
9059	S-JF3 Screw 25 mm	25 mm	A2 Stainless Steel
9060	S-JF3 Screw 35 mm	35 mm	



S-Shingle X

- Suitable for tile roof types
- Economical, fast, easy and safe
- Accurate and economical solution thanks to 3 different height options
- Equal pressure distribution on the roof thanks to its strong and balanced structure
- Powerful wind resistance with aerodynamical design
- Adjustable height against roof fluctuations
- Horizontal and vertical panel placement
- %100 compatible for all solar panels
- Special size option on request



S-Shingle X

S-Flashing



Ürün Kodu	Ürün Açıklaması	Uzunluk	Özellikler
9094	S-Flashing, 8.0 x 85 / 70	85 mm	A2 Paslanmaz Çelik
9095	S-Flashing, 8.0 x 115 / 70	115 mm	
9096	S-Flashing, 8.0 x 135 / 70	135 mm	

S-L Foot



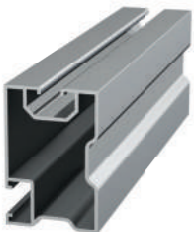
Ürün Kodu	Ürün Açıklaması	Uzunluk	Özellikler
9012	S-L Foot, Mill Finished	35 mm	EN AW-6063 / T66
9013	S-L Foot, Black Anodized		

S-Armor 40



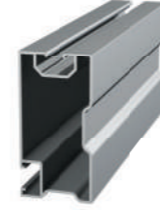
Ürün Kodu	Ürün Açıklaması	Gramaj	Özellikler
2007	S-Armor 40, Mill Finished	0,859 kg	EN AW-6063 / T66
2008	S-Armor 40, Black Anodized		

S-Armor 60



Ürün Kodu	Ürün Açıklaması	Gramaj	Özellikler
2009	S-Armor 60, Mill Finished	1,022kg	EN AW-6063 / T66
2010	S-Armor 60, Black Anodized		

S-Armor 80



Ürün Kodu	Ürün Açıklaması	Gramaj	Özellikler
2011	S-Armor 80, Mill Finished	1,185 kg	EN AW-6063 / T66
2012	S-Armor 80, Black Anodized		

S-Clamp Mid SpeedPro



Ürün Kodu	Ürün Açıklaması	Uzunluk	Özellikler
9009	S-Clamp Mid SpeedPro, Mill Finished	60 mm	EN AW-6063 / T66
9010	S-Clamp Mid SpeedPro, Black Anodized		

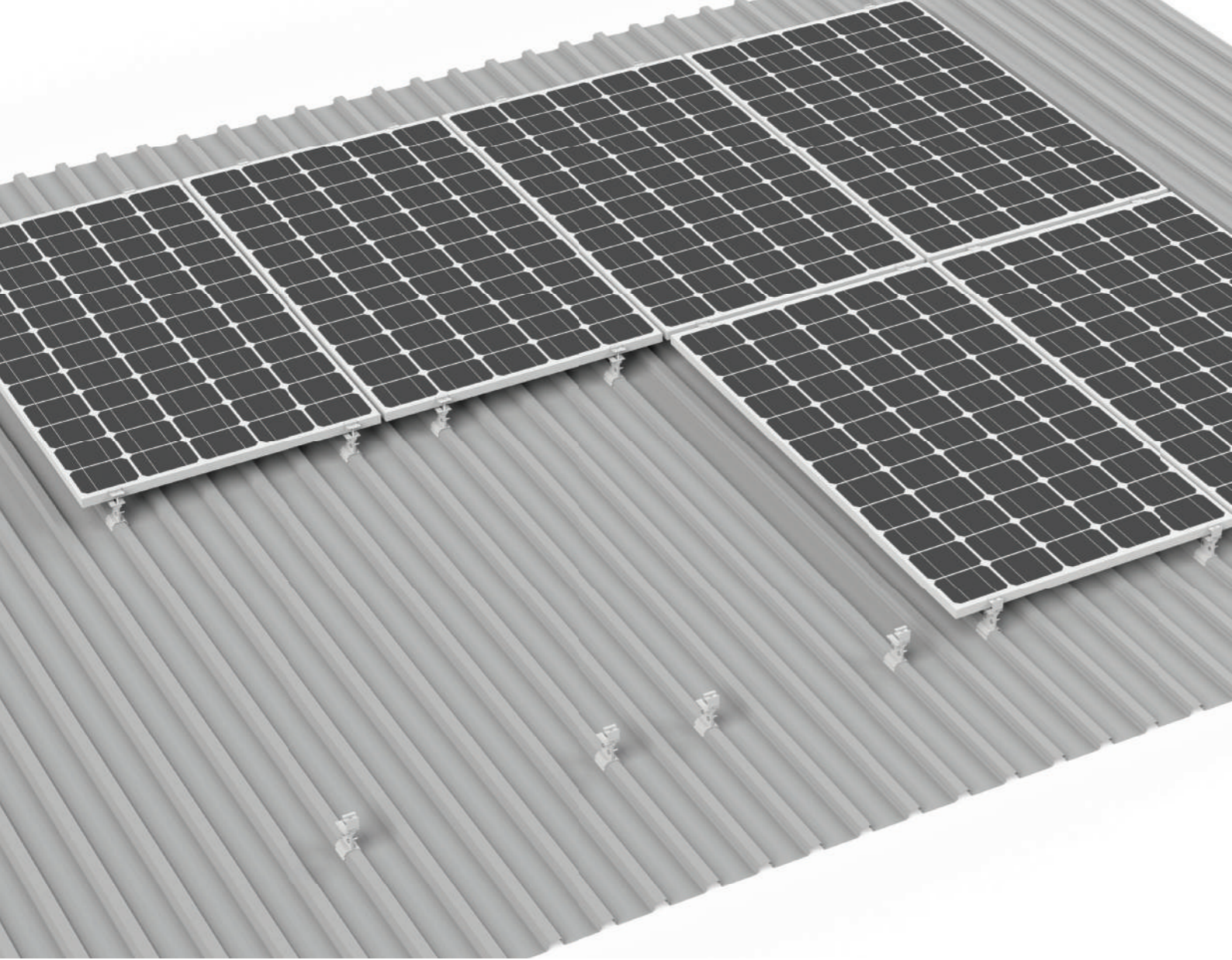
*Please specify panel size on order.

S-Clamp End SpeedPro



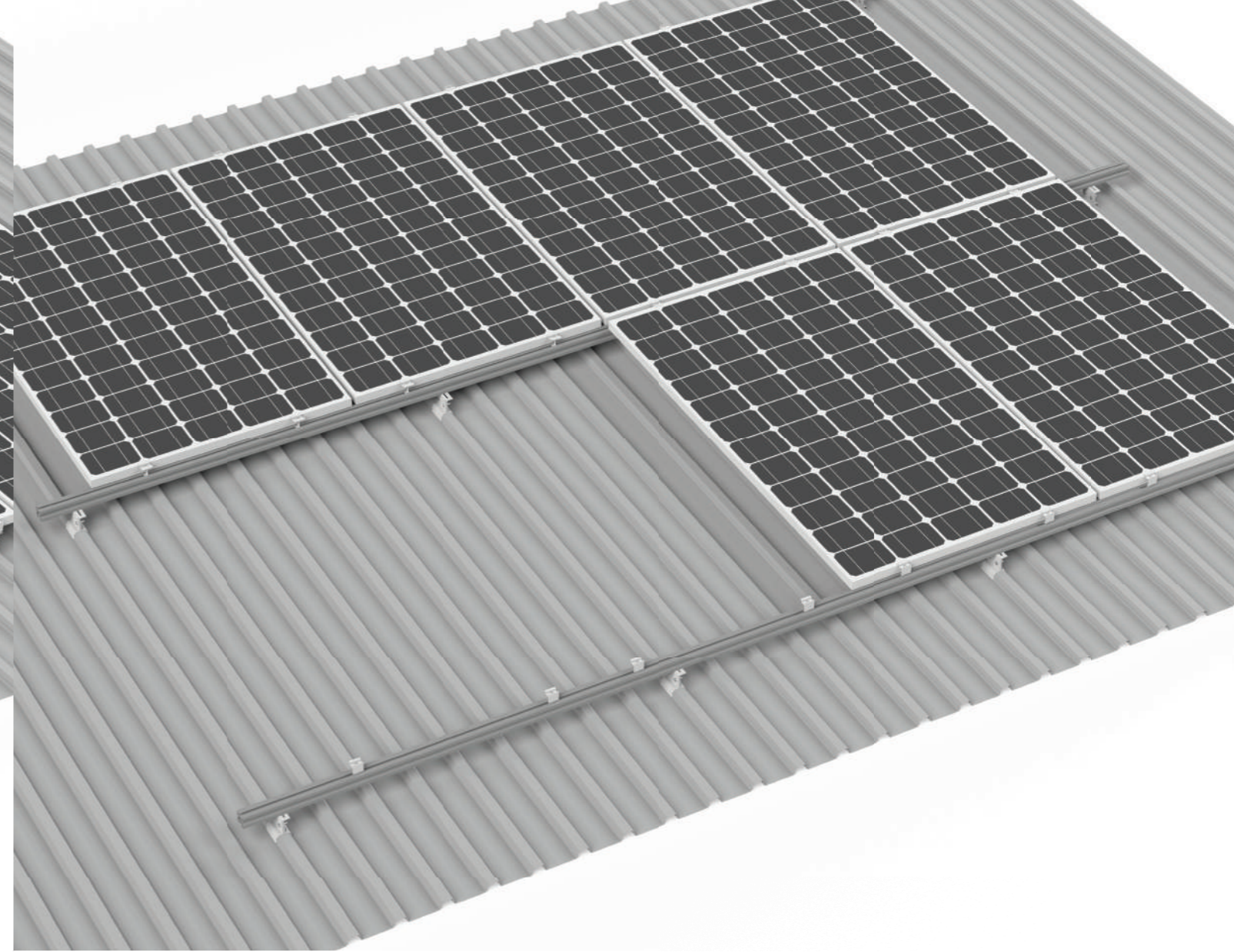
Ürün Kodu	Ürün Açıklaması	Uzunluk	Özellikler
9011	S-Clamp End SpeedPro, Mill Finished	60 mm	EN AW-6063 / T66
9012	S-Clamp End SpeedPro, Black Anodized		

*Please specify panel size on order.



S-Aluform UltraLight

- Suitable for Aluform Quickfix PIR roof types
- Economical, fast, easy and safe
- Accurate and economical solution thanks to 3 different height options
- Equal pressure distribution on the roof thanks to its strong and balanced structure
- Direct mounting
- Horizontal and vertical panel placement
- %100 compatible for all solar panels
- Installation by compaction on the roof without drilling



S-Aluform Dynamic+

- Suitable for Aluform Quickfix PIR roof types
- Economical, fast, easy and safe
- Accurate and economical solution thanks to 3 different height options
- Equal pressure distribution on the roof thanks to its strong and balanced structure
- 1000 mm - 7000 mm length range option
- Horizontal and vertical panel placement
- %100 compatible for all solar panels
- Installation by compaction on the roof without drilling



S-Aluform

S- Aluform UltraLight



Product No	Descriptions	Length	Materials
8001	S- Aluform UltraLight, Mill Finished	80 mm	EN AW-6063 / T66

Compatible with Aluform PIR Photovoltaic Quick Fix roof panel
Usage: Direct solar panel mounting

S- Aluform Dynamic+



Product No	Descriptions	Length	Materials
8002	S- Aluform Dynamic+, Mill Finished	50 mm	EN AW-6063 / T66

Compatible with Aluform PIR Photovoltaic Quick Fix roof panel
Usage: With S-Guard 60

S-Guard 40



Product No	Descriptions	Weight	Materials
2001	S-Guard 40, Mill Finished	0,911 kg/m	EN AW-6063 / T66
2002	S-Guard 40, Black Anodized		

S-Guard 60



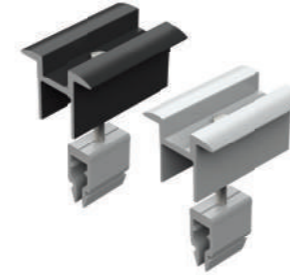
Product No	Descriptions	Weight	Materials
2003	S-Guard 60, Mill Finished	1,073 kg/m	EN AW-6063 / T66
2004	S-Guard 60, Black Anodized		

S-Guard 80



Product No	Descriptions	Weight	Materials
2005	S-Guard 80, Mill Finished	1,236 kg/m	EN AW-6063 / T66
2006	S-Guard 80, Black Anodized		

S-Clamp Mid SpeedPro



Product No	Descriptions	Length	Materials
9009	S-Clamp Mid SpeedPro, Mill Finished	60 mm	EN AW-6063 / T66
9010	S-Clamp Mid SpeedPro, Black Anodized		

*Please specify panel size on order.

S-Clamp End SpeedPro

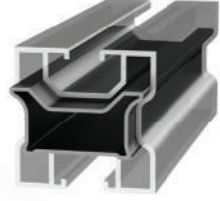


Product No	Descriptions	Length	Materials
9011	S-Clamp End SpeedPro, Mill Finished	60 mm	EN AW-6063 / T66
9012	S-Clamp End SpeedPro, Black Anodized		

*Please specify panel size on order.

S-Aluform

S-Guard Connector



Product No	Descriptions	Length	Materials
9041	S-Guard 40 Connector, Mill Finished	200 mm	EN AW-6063 / T66
9042	S-Guard 60 Connector, Mill Finished		
9043	S-Guard 80 Connector, Mill Finished		

S-Grounding



Product No	Descriptions	Length	Materials
9031	S-Grounding, Mill Finished	35 mm	EN AW-6063 / T66
9032	S-Grounding, Black Anodized		

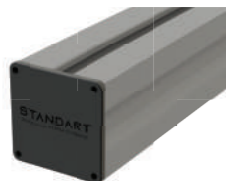
S-Defender



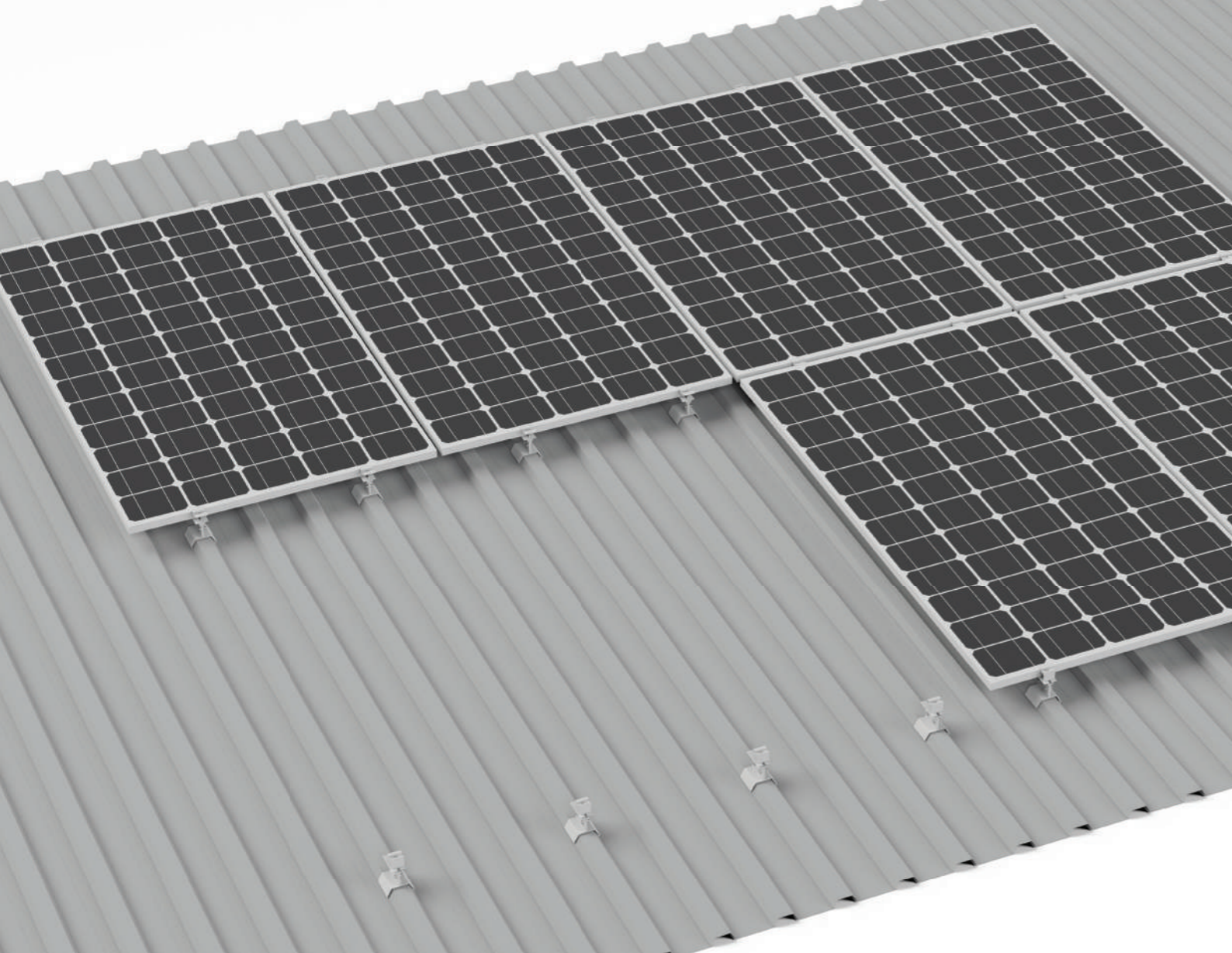
Product No	Descriptions	Length	Materials
9029	S-Defender, Mill Finished	70 mm	EN AW-6063 / T66
9030	S-Defender, Black Anodized		

Fast, easy and secure connection from clamp ports
 Large support area for solar panels
 Compatible with All Standart Aluminium Solar Systems

S-Guard End Cap

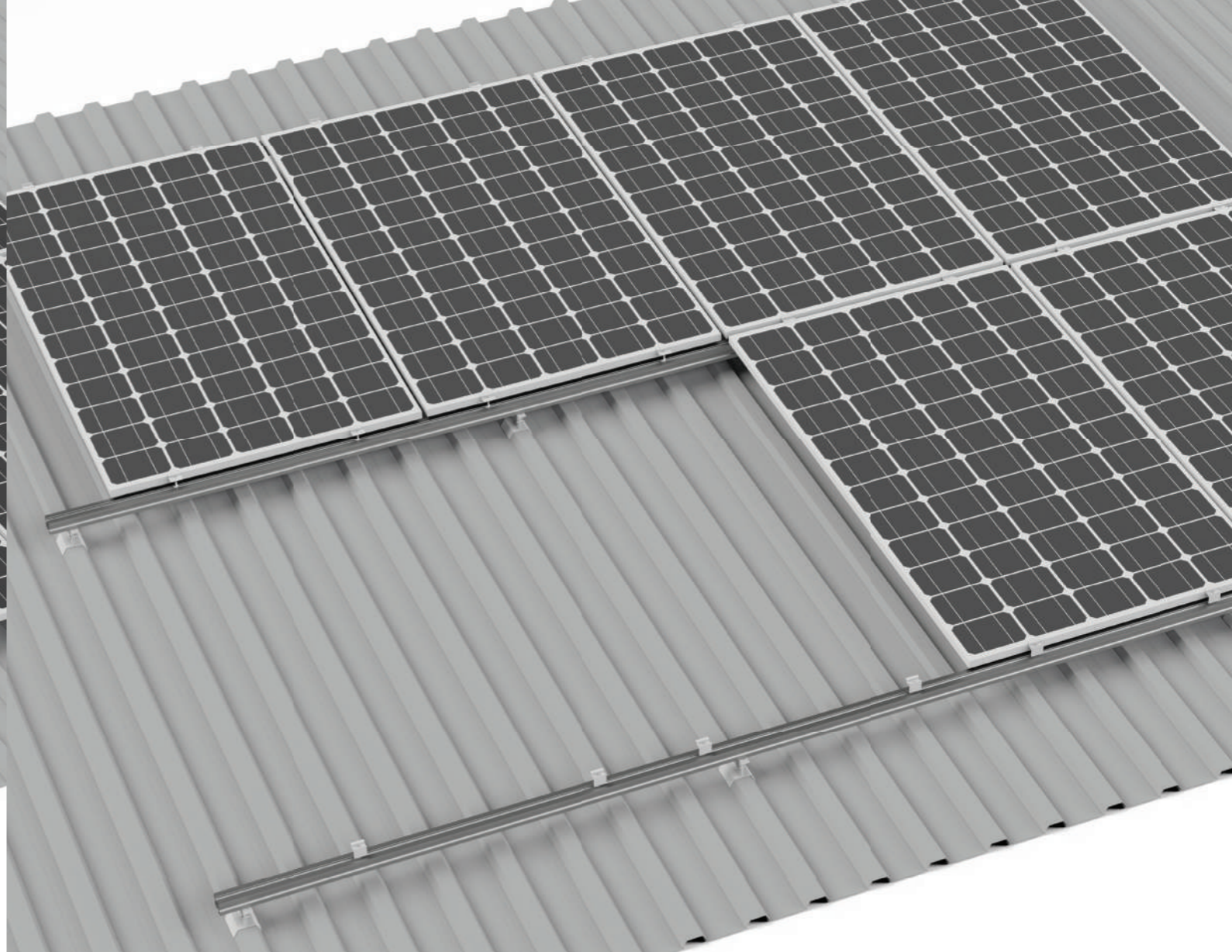


Product No	Descriptions	Colour	Materials
9047	S-Guard 40 End Cap	Black	Poliamid
9048	S-Guard 60 End Cap		
9049	S-Guard 80 End Cap		



S-Hekim Panel UltraLight

- Suitable for Hekim Panel roof types
- Economical, fast, easy and safe
- Accurate and economical solution thanks to 3 different height options
- Equal pressure distribution on the roof thanks to its strong and balanced structure
- Direct mounting
- Horizontal and vertical panel placement
- %100 compatible for all solar panels
- Installation by compaction on the roof without drilling



S-Hekim Panel Dynamic+

- Suitable for Hekim Panel roof types
- Economical, fast, easy and safe
- Accurate and economical solution thanks to 3 different height options
- Equal pressure distribution on the roof thanks to its strong and balanced structure
- Direct mounting
- Horizontal and vertical panel placement
- %100 compatible for all solar panels
- Installation by compaction on the roof without drilling



S-Hekim Panel

S- Hekim Panel UltraLight



Product No	Descriptions	Length	Materials
8003	S- Hekim Panel UltraLight, Mill Finished	80 mm	EN AW-6063 / T66

Compatible with Hekim Panel roof panel
Usage: Direct solar panel mounting

S- Hekim Panel Dynamic+



Product No	Descriptions	Length	Materials
8004	S- Hekim Panel Dynamic+, Mill Finished	50 mm	EN AW-6063 / T66

Compatible with Hekim Panel roof panel
Usage: With S-Guard

S-Guard 40



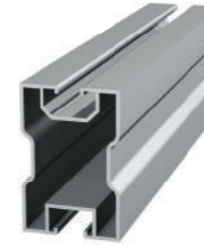
Product No	Descriptions	Weight	Materials
2001	S-Guard 40, Mill Finished	0,911 kg/m	EN AW-6063 / T66
2002	S-Guard 40, Black Anodized		

S-Guard 60



Product No	Descriptions	Weight	Materials
2003	S-Guard 60, Mill Finished	1,073 kg/m	EN AW-6063 / T66
2004	S-Guard 60, Black Anodized		

S-Guard 80



Product No	Descriptions	Weight	Materials
2005	S-Guard 80, Mill Finished	1,236 kg/m	EN AW-6063 / T66
2006	S-Guard 80, Black Anodized		

S-Clamp Mid SpeedPro



Product No	Descriptions	Length	Materials
9009	S-Clamp Mid SpeedPro, Mill Finished	60 mm	EN AW-6063 / T66
9010	S-Clamp Mid SpeedPro, Black Anodized		

*Please specify panel size on order.

S-Clamp End SpeedPro

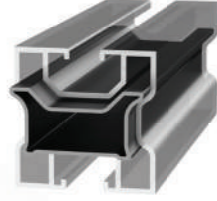


Product No	Descriptions	Length	Materials
9011	S-Clamp End SpeedPro, Mill Finished	60 mm	EN AW-6063 / T66
9012	S-Clamp End SpeedPro, Black Anodized		

*Please specify panel size on order.

S-Aluform

S-Guard Connector



Product No	Descriptions	Length	Materials
9041	S-Guard 40 Connector, Mill Finished	200 mm	EN AW-6063 / T66
9042	S-Guard 60 Connector, Mill Finished		
9043	S-Guard 80 Connector, Mill Finished		

S-Grounding



Product No	Descriptions	Length	Materials
9031	S-Grounding, Mill Finished	35 mm	EN AW-6063 / T66
9032	S-Grounding, Black Anodized		

S-Defender



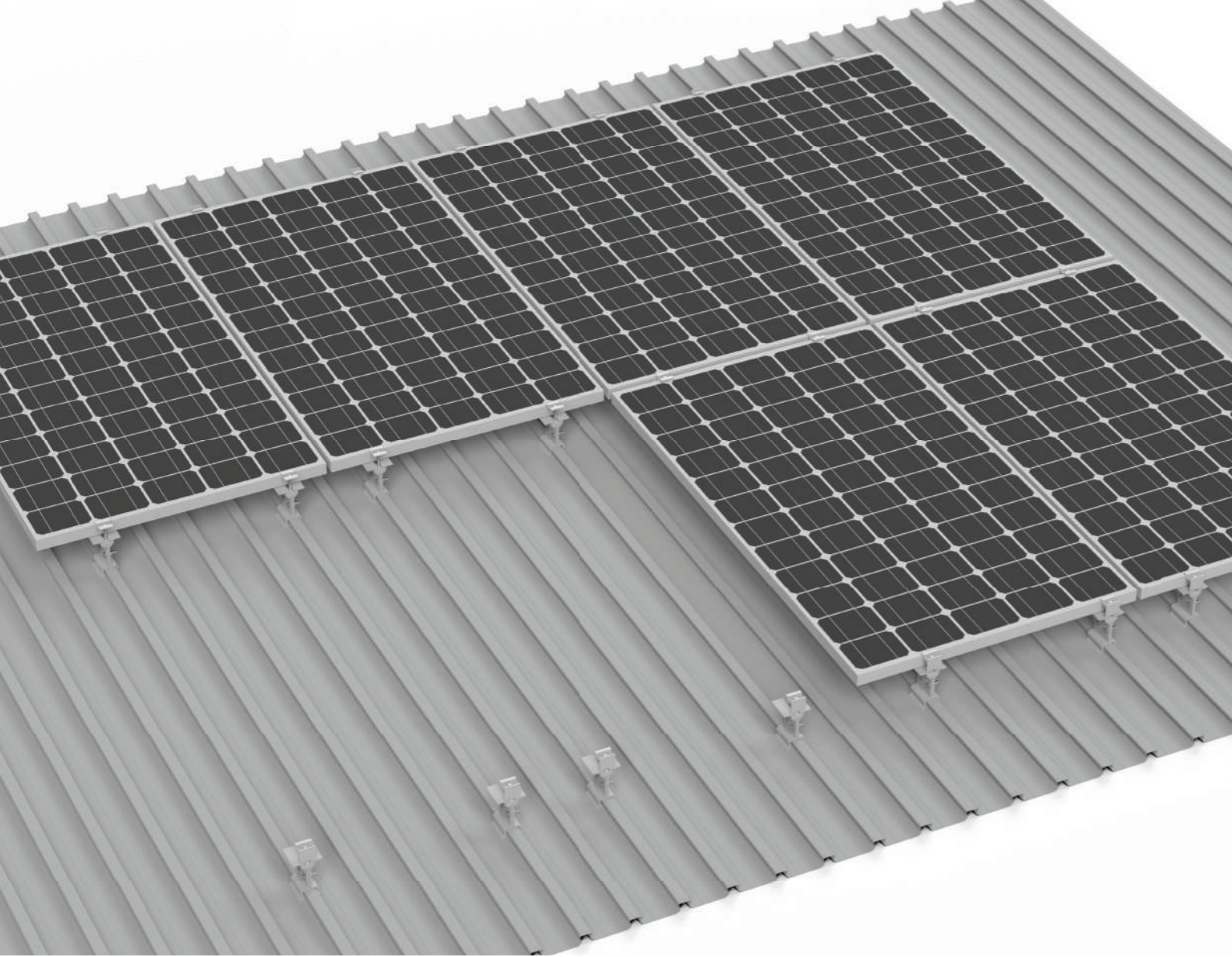
Product No	Descriptions	Length	Materials
9029	S-Defender, Mill Finished	70 mm	EN AW-6063 / T66
9030	S-Defender, Black Anodized		

Fast, easy and secure connection from clamp ports
 Large support area for solar panels
 Compatible with All Standart Aluminium Solar Systems

S-Guard End Cap

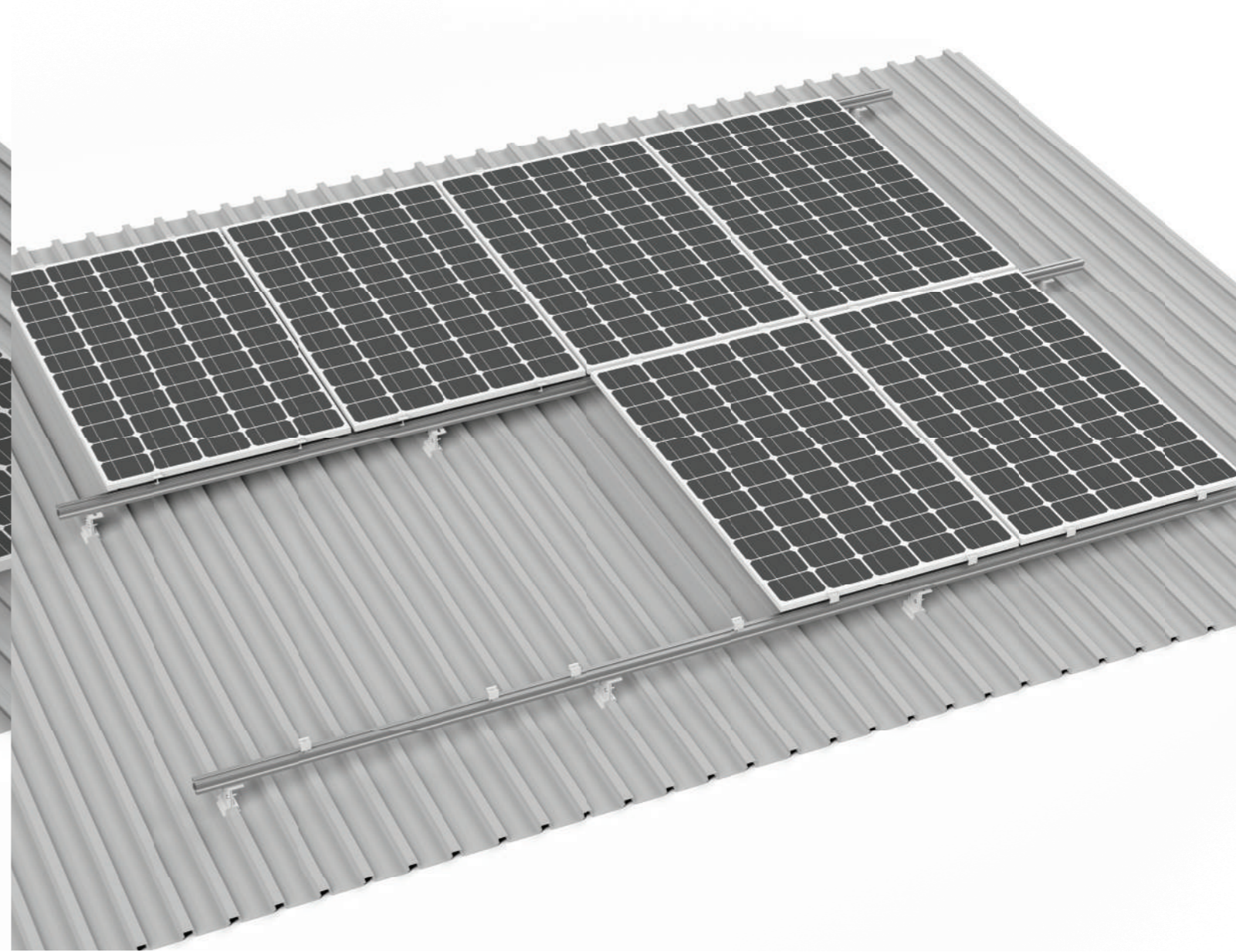


Product No	Descriptions	Colour	Materials
9047	S-Guard 40 End Cap	Black	Poliamid
9048	S-Guard 60 End Cap		
9049	S-Guard 80 End Cap		



S-Davut Panel UltraLight

- Suitable for Davut Panel roof types
- Economical, fast, easy and safe
- Accurate and economical solution thanks to 3 different height options
- Equal pressure distribution on the roof thanks to its strong and balanced structure
- Direct mounting
- Horizontal and vertical panel placement
- %100 compatible for all solar panels
- Installation by compaction on the roof without drilling



S-Davut Panel Dynamic+

- Suitable for Davut Panel roof types
- Economical, fast, easy and safe
- Accurate and economical solution thanks to 3 different height options
- Equal pressure distribution on the roof thanks to its strong and balanced structure
- 1000 mm - 7000 mm length range option
- Horizontal and vertical panel placement
- %100 compatible for all solar panels
- Installation by compaction on the roof without drilling



S-Davut Panel

S- Davut Panel UltraLight



Product No	Descriptions	Length	Materials
8005	S- Davut Panel UltraLight, Mill Finished	80 mm	EN AW-6063 / T66

Compatible with Davut Panel roof panel
Usage: Direct solar panel mounting

S- Davut Panel Dynamic+



Product No	Descriptions	Length	Materials
8006	S- Davut Panel Dynamic+, Mill Finished	50 mm	EN AW-6063 / T66

Compatible with Davut Panel roof panel
Usage: With S-Guard

S-Guard 40



Product No	Descriptions	Weight	Materials
2001	S-Guard 40, Mill Finished	0,911 kg/m	EN AW-6063 / T66
2002	S-Guard 40, Black Anodized		

S-Guard 60



Product No	Descriptions	Weight	Materials
2004	S-Guard 60, Mill Finished	1,073 kg/m	EN AW-6063 / T66
2005	S-Guard 60, Black Anodized		

S-Guard 80



Product No	Descriptions	Weight	Materials
2005	S-Guard 80, Mill Finished	1,236 kg/m	EN AW-6063 / T66
2006	S-Guard 80, Black Anodized		

S-Clamp Mid SpeedPro



Product No	Descriptions	Length	Materials
9009	S-Clamp Mid SpeedPro, Mill Finished	60 mm	EN AW-6063 / T66
9010	S-Clamp Mid SpeedPro, Black Anodized		

*Please specify panel size on order.

S-Clamp End SpeedPro

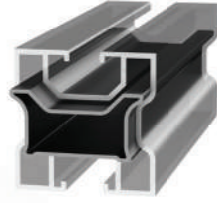


Product No	Descriptions	Length	Materials
9011	S-Clamp End SpeedPro, Mill Finished	60 mm	EN AW-6063 / T66
9012	S-Clamp End SpeedPro, Black Anodized		

*Please specify panel size on order.

S-Davut Panel

S-Guard Connector



Product No	Descriptions	Length	Materials
9041	S-Guard 40 Connector, Mill Finished	200 mm	EN AW-6063 / T66
9042	S-Guard 60 Connector, Mill Finished		
9043	S-Guard 80 Connector, Mill Finished		

S-Grounding



Product No	Descriptions	Length	Materials
9031	S-Grounding, Mill Finished	35 mm	EN AW-6063 / T66
9032	S-Grounding, Black Anodized		

S-Defender



Product No	Descriptions	Length	Materials
9029	S-Defender, Mill Finished	70 mm	EN AW-6063 / T66
9030	S-Defender, Black Anodized		

Fast, easy and secure connection from clamp ports
 Large support area for solar panels
 Compatible with All Standart Aluminium Solar Systems

S-Guard End Cap

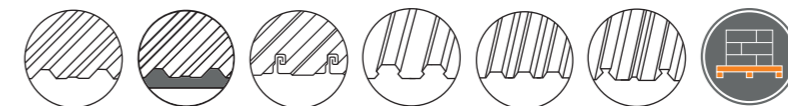


Product No	Descriptions	Length	Materials
9047	S-Guard 40 End Cap	Black	Poliamid
9048	S-Guard 60 End Cap		
9049	S-Guard 80 End Cap		

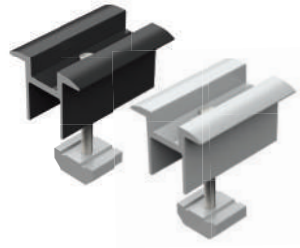


Accessories

- Fast, compact, easy and safe
- Strong and balanced grip with unique designs
- Incredibly resistant to heavy impacts and loads
- Equal pressure distribution on the roof thanks to its strong and balanced structure
- Suitable for horizontal and vertical panel placement
- 100% compatible with all solar panels
- Compatible with All Standard Aluminium Solar Mounting Systems



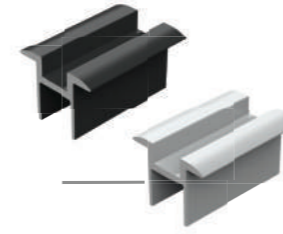
S-Clamp Mid GrandPro



Product No	Descriptions	Length	Materials
9001	S-Clamp Mid GrandPro, Mill Finished	60 mm	EN AW-6063 / T66
9002	S-Clamp Mid GrandPro, Black Anodized		

*Please specify panel size on order.

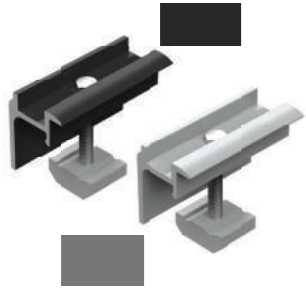
S-Clamp Mid



Product No	Descriptions	Length	Materials
9017	S-Clamp Mid, Mill Finished	60 mm	EN AW-6063 / T66
9018	S-Clamp Mid, Black Anodized		

*Please specify panel size on order.

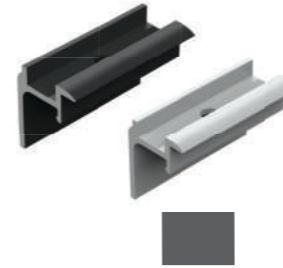
S-Clamp End GrandPro



Product No	Descriptions	Length	Materials
9003	S-Clamp End GrandPro, Mill Finished	60 mm	EN AW-6063 / T66
9004	S-Clamp End GrandPro, Black Anodized		

*Please specify panel size on order.

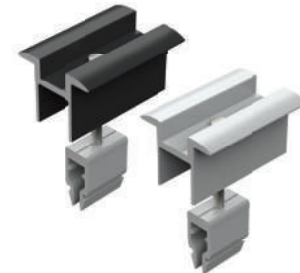
S-Clamp End



Product No	Descriptions	Length	Materials
9017	S-Clamp End, Mill Finished	60 mm	EN AW-6063 / T66
9018	S-Clamp End, Black Anodized		

*Please specify panel size on order.

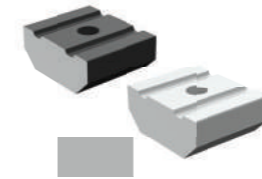
S-Clamp Mid SpeedPro



Product No	Descriptions	Length	Materials
9009	S-Clamp Mid SpeedPro, Mill Finished	60 mm	EN AW-6063 / T66
9010	S-Clamp Mid SpeedPro, Black Anodized		

*Please specify panel size on order.

S-Connector Fit



Product No	Descriptions	Length	Materials
9025	S-Connector Fit, Mill Finished	17 mm	EN AW-6063 / T66
9026	S-Connector Fit, Black Anodized		

S-Clamp End SpeedPro



Product No	Descriptions	Length	Materials
9011	S-Clamp End SpeedPro, Mill Finished	60 mm	EN AW-6063 / T66
9012	S-Clamp End SpeedPro, Black Anodized		

*Please specify panel size on order.

S-Connector Clips



Product No	Descriptions	Length	Materials
9027	S-Connector Clips, Mill Finished	16 mm	EN AW-6063 / T66
9028	S-Connector Clips, Black Anodized		

S-Defender



Product No	Descriptions	Length	Materials
9029	S-Defender, Mill Finished	70 mm	EN AW-6063 / T66
9030	S-Defender, Black Anodized		

Fast, easy and secure connection from clamp ports
 Large support area for solar panels
 Compatible with All Standart Aluminium Solar Systems

S-Grounding



Product No	Descriptions	Length	Materials
9031	S-Grounding, Mill Finished	35 mm	EN AW-6063 / T66
9032	S-Grounding, Black Anodized		

Grounding Part

S-Clamp Glass Mid



Product No	Descriptions	Length	Materials
9033	S-Clamp Glass Mid, Mill Finished	200 mm	EN AW-6063 / T66 and EN AW-6060 / T66
9034	S-Clamp Glass Mid, Matte Anodized		
9035	S-Clamp Glass Mid, Glossy Anodized		
9036	S-Clamp Glass Mid, Black Anodized		

Compatible with glass-glass double-sided solar panels

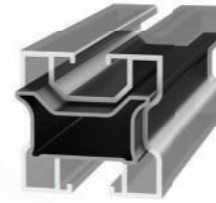
S-Clamp Glass End



Product No	Descriptions	Length	Materials
9037	S-Clamp Glass End, Mill Finished	200 mm	EN AW-6063 / T66 and EN AW-6060 / T66
9038	S-Clamp Glass End, Matte Anodized		
9039	S-Clamp Glass End, Glossy Anodized		
9040	S-Clamp Glass End, Black Anodized		

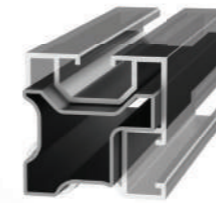
Compatible with glass-glass double-sided solar panels

S-Guard Connector



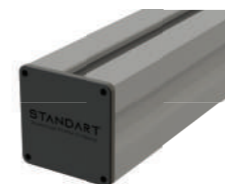
Product No	Descriptions	Length	Materials
9041	S-Guard 40 Connector, Mill Finished	200 mm	EN AW-6063 / T66
9042	S-Guard 60 Connector, Mill Finished		
9043	S-Guard 80 Connector, Mill Finished		

S-Armor Connector



Product No	Descriptions	Length	Materials
9044	S-Armor 40 Connector, Mill Finished	200 mm	EN AW-6063 / T66
9045	S-Armor 60 Connector, Mill Finished		
9046	S-Armor 80 Connector, Mill Finished		

S-Guard End Cap



Product No	Descriptions	Colour	Materials
9047	S-Guard 40 End Cap	Black	Poliamid
9048	S-Guard 60 End Cap		
9049	S-Guard 80 End Cap		

S-Armor End Cap



Product No	Descriptions	Colour	Materials
9050	S-Armor 40 End Cap	Black	Poliamid
9051	S-Armor 60 End Cap		
9052	S-Armor 80 End Cap		

S-Shield



Product No	Descriptions	Length	Materials
9053	S-Shield	70 mm	A2 Stainless Steel

Roof fastener for S-Sprinter systems

S-L Foot



Product No	Descriptions	Length	Materials
9055	S-L Foot, Mill Finished	35 mm	EN AW-6063 / T66
9056	S-L Foot, Black Anodized		

Adjustable height against fluctuations on the roof
Usage: With S-Armor

S-C Foot



Product No	Descriptions	Length	Materials
9057	S-C Foot, Mill Finished	35 mm	EN AW-6063 / T66
9058	S-C Foot, Black Anodized		

Usage With S-Guard

S-JF3 Screw



Product No	Descriptions	Length	Materials
9059	S-JF3 Screw 25 mm	Length	A2 Stainless Steel
9060	S-JF3 Screw 35 mm	35 mm	

S-JT4 Screw



Product No	Descriptions	Length	Materials
9061	S-JT4 Screw 22 mm	22 mm	A2 Stainless Steel

Imbus Screw



Product No	Descriptions	Length	Materials
9062	Imbus Screw M8*25	25 mm	DIN 912 A2 Stainless Steel
9063	Imbus Screw M8*30	30 mm	
9064	Imbus Screw M8*35	35 mm	
9065	Imbus Screw M8*40	40 mm	

Hexagonal Screw



Product No	Descriptions	Length	Materials
9066	Hexagonal Screw M8*20	20 mm	DIN 933 A2 Stainless Steel
9067	Hexagonal Screw M8*25	25 mm	
9068	Hexagonal Screw M8*30	30 mm	
9069	Hexagonal Screw M8*35	35 mm	
9070	Hexagonal Screw M10*20	20 mm	
9071	Hexagonal Screw M10*25	25 mm	
9072	Hexagonal Screw M10*30	30 mm	
9073	Hexagonal Screw M10*35	35 mm	

Flanged Screw



Product No	Descriptions	Length	Materials
9074	Flanged Screw M8*20	20 mm	DIN 6921 A2 Stainless Steel
9075	Flanged Screw M8*25	25 mm	
9076	Flanged Screw M8*30	30 mm	
9077	Flanged Screw M10*20	20 mm	
9078	Flanged Screw M10*25	25 mm	
9079	Flanged Screw M10*30	30 mm	

Setscrew



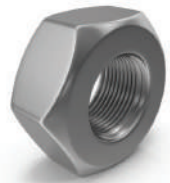
Product No	Descriptions	Length	Materials
9080	Setscrew M8*25	25 mm	DIN 916 A2 Stainless Steel
9081	Setscrew M8*30	30 mm	
9082	Setscrew M8*35	35 mm	
9083	Setscrew M8*40	40 mm	

Washer



Product No	Descriptions	Metric Diameter	Materials
9084	Flat Washer M8	M8	DIN 125 & DIN 6798 A2 Stainless Steel
9085	Flat Washer M10	M10	
9086	Knurled Washer M8	M8	
9087	Knurled Washer M10	M10	

Nut



Product No	Descriptions	Metric Diameter	Materials
9088	Nut M8	M8	DIN 934 & DIN 6923 A2 Stainless Steel
9089	Nut M10	M10	
9090	Flanged Nut M8	M8	
9091	Flanged Nut M10	M10	



İstanbul Office

Taşocağı Blvd. Balance Güneşli Residence 19.Kat No:76 Bağcılar/İstanbul



Gaziantep Factory

4.OSB M.Lütfullah Bilgin Blvd. No:7/3 Şehitkamil/Gaziantep



Kırklareli Factory

Kırklareli OSB 7. Street No:18



www.standartaluminyum.com

info@standartaluminyum

© 2023-2024 design and visual rights of this catalog is belong to Standart Aluminium.
No copyright without permission.
Patented by Turkish Patent and Brand Office.

STANDART^{AI}

Aluminium Profile Company

Solar Mounting Systems

www.standartaluminyum.com